

# Quick Start Guide

Rugged Tablet



# 12.2" industrial grade lightweight portable rugged tablet pc

Thank you for your choosing the new Tablet PC.

This guide serves to enable users to get to know and familiar with our product as soon as possible. Here we have made a brief introduction to the key layout and definitions in figures and words. And a brief explain for the basic operating functions.

## **note:**

- Some descriptions of this manual may assume that you are using the windows10, if you use another windows version operation system, some operation may have some different. If you are use other operation system, some operations may not suit for you.
- The manual description is for the common use functions of most models have. Your computer may not have some functions, or the manual not introduce some functions in your computers.
- This manual apply to 12.2 inch industrial grade lightweight portable rugged tablet pc
- The illustration of this manual may different from actual products, please take actual product as standard.

# Table of contents

---

Brief Introduction	5
Device brief introduction	5
Precautions	5
Key layout and definitions	7
Introduction to desktop	11
Windows 10 start image	11
Image slide applications	12
Introduction to app Interface	14
Charm menu column	17
Multitasking operating interface	20
Basic Operations	21
Operation guidance of accessories installation	22
Holder installation	22
Handle installation	23
keyboard installation	24
Windows operating instructions of special function module	26
Product accessories	33

As we are often updating and improving our products, your device's software may have a slightly different appearance or modified functionality than presented in this Quick Start Guide.

# Brief Introduction

## 1. Device brief introduction

Product features: this product is 12.2" industrial grade lightweight portable rugged tablet pc, meet international VESA desktop, cantilever type install, at the same time Equip with a keyboard accessory, This is a 2 in 1 combined reinforcement laptop, with handle, easy to take. Plentiful functions on whole product: 1D/2D configurations, NFC, GPS,WIFI,3G,LTE. Can meet the needs of the vast majority of application scenarios.

## 2. Use of the previous note

- (1), There will be explosion dangerous if use wrong model battery to replace, it must use original battery.
- (2), Avoid to drop machine on the floor or other strong shocks.
- (3), Do not long-term use it in under cooling, over heating (<55 Centigrade),too wet, dusty environment, do not exposure this machine in the sun for a long time .
- (4), Try to avoid using it in Strong magnetic, strong electrostatic environment.
- (5), Once the machine drop into water or other liquid, check the port immediately, also wipe the machine and dry it for use.
- (6), Do not use any Contain chemical cleaners, or other liquid to wipe this machine, to avoid to cause damages because of Corrosion and damp, if it is necessary to clean, please use dry soft cloth or paper towel to wipe.

# Brief Introduction

---

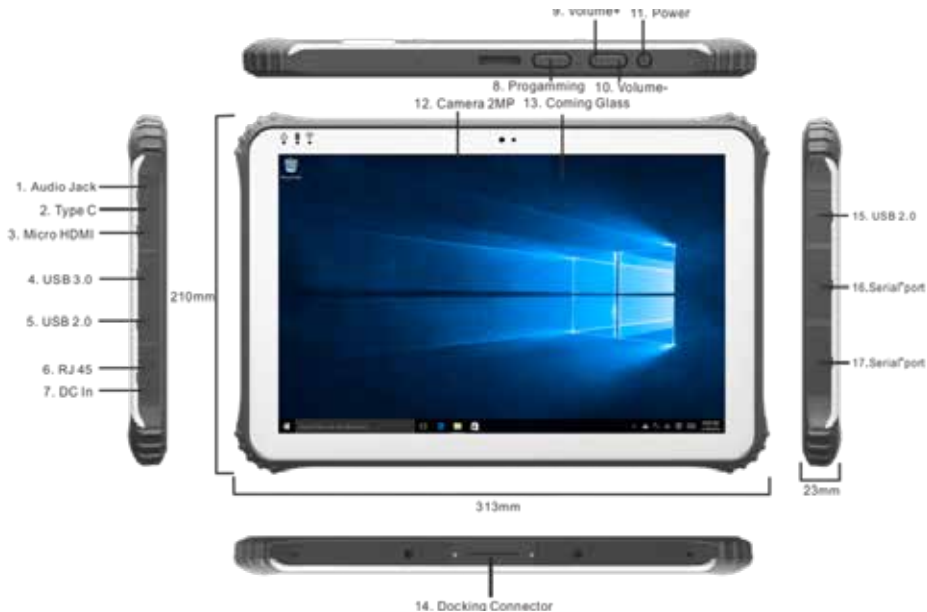
(7), Our company not responsible for data missing or deletion because of Human abnormal hardware and software operation, maintenance or other accidents, also not responsible for other losses for this reason.

(8), Please back-up copy your important data anytime to avoid missing.

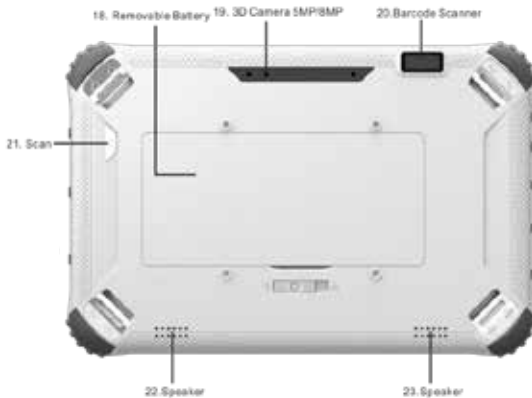
(9), Please do not disassembly the machine by yourself, or will Lost the warranty rights.

(10), This product supports Most of the mainstream brands 3G DONGLE EVDO, 3G Dongle may have difference, suggest you test it ok and then purchase.

# Key layout and definition



# Key layout and definition





# Key layout and definition

1. **Earphone Jack:** the jack support outputs the audio signal to the loudspeaker or Headset .
2. **Micro USB/Type C port:** you can read data out through this USB.
3. **HDMI:**High-Definition Multimedia Interface.
- 4.5.15. **USB PORT :** Standard USB 2.0/USB3.0 port, you can read data out through this USB.
6. **RJ45 PORT:** Use for LAN and ADSL Broadband Internet cable connection among user's network equipment.
7. **Charging port:** charge your tablet pc through DC port.
8. **KEY:** Reserve key for customer customized .
- 9.10. **voice sound -/ voice sound+:**reduce / increase the volume .
11. **Power button:** to start or close touch screen panel. You can also let the computer to sleep or wake up from hibernation mode.
12. **Front camera:** camera, video.
13. **Touch screen:** Corning Gorilla Glass , support Gloves/wet hands touch.
14. **The docking interface:** This interface and positioning hole to cooperate, convenient to alignment and steady the link tablet with a keyboard or docking.
- 16.17. **DB9 port:** Type D data interface connector, use for connect the port standard of electronic device .

# Key layout and definition

---

**18. Removable battery:** 7500mHA/1000mha/7.4V big battery.

**19. Rear camera:** camera, video.

**20. One-dimensional code scanner/ two-dimensional code scanner:** to support one / two-dimensional code scanning.

**21. Scan button:** scan switch on/off shortcut key.

**22.23. Speaker:** built-in speaker, allow you can hear the sound without additional link equipment

# Introduction to Desktop

## 1. Windows 10 start image

Windows 10 start image: On the start screen, you can see many programs fixed in the image. These application programs are displayed in the form of "magnet". As long as you click them, you can easily visit them.

You need to log on your Microsoft account before the application program completely runs.



# Introduction to Desktop

## 2. Image slide applications

### Side to left slide to right



Slide to right from screen left side to enter into setting control center.

### Side to right slide to left



slide to left from screen right side With start the running application programs.

# Introduction to Desktop

## Side to left slide to right



In start screen, slide from the top of the screen ,to view application programs

## Side to right slide to left



In start screen, slide finger up and down to move the image.

# Introduction to Desktop

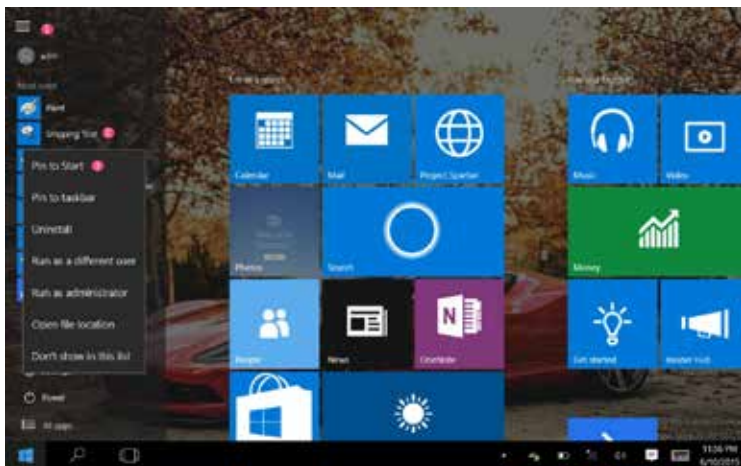
## 3. App interface introduction

Besides the application programs already fixed on the start screen, you can also start other application programs in all application programs, such as other software application programs attached to the Tablet PC.



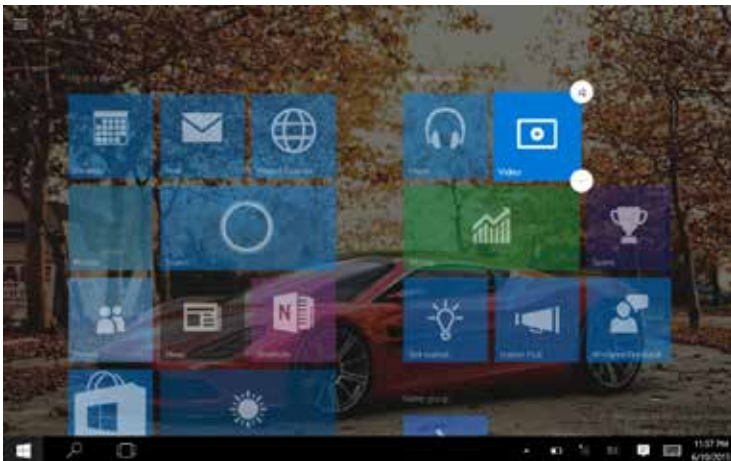
# Introduction to Desktop

If you want to fix more application programs on the start interface, see the operation in the figure below, (1) press and hold the application program magnet for about one second and then let go, chose (2) to fix on start screen.



# Introduction to Desktop

Conversely, if you want to cancel or delete a certain application in the start screen, (1) lightly touch, press and hold the application program magnet for about one second and then let it go and run, chose (2)property bar, relieve fix , delete and son on application programs and then can finish.





# Introduction to Desktop

## 4. Charm menu column

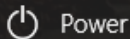
Press start button on pc mode to start Charm menu column, including: Start, Device, Setup, Share, and Search Program.



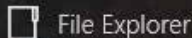
# Introduction to Desktop

---

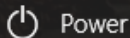
Usually include : File Explorer, Settings, Power, and All apps



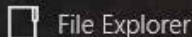
Can Sleep/Shut down/Restart the Tablet PC.



Can let you search the files and application programs in the Tablet PC.



Can let you set up the Table PC.



Can scan more apps.

# Introduction to Desktop

Search menu



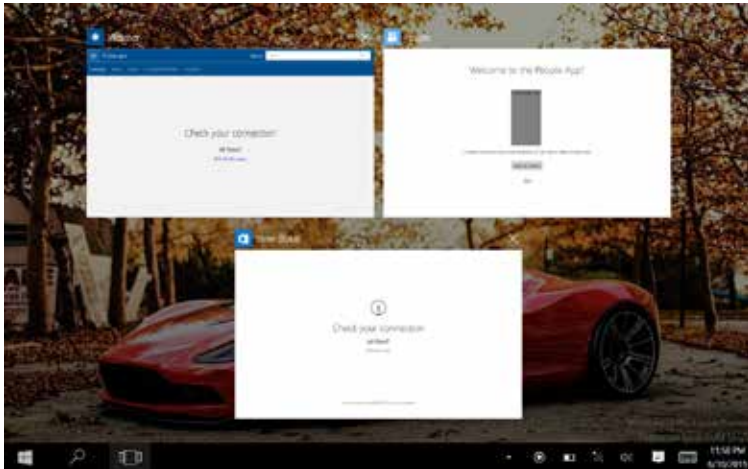
Set up menu



# Introduction to Desktop

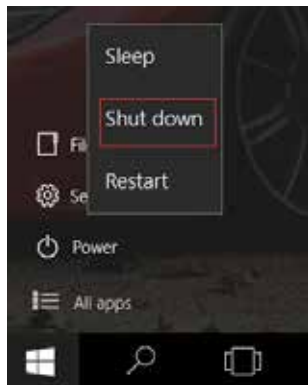
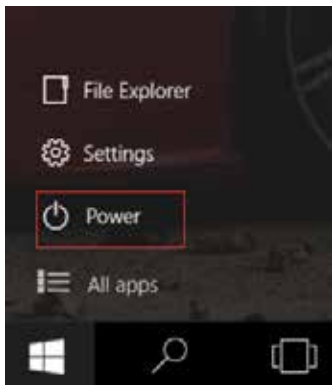
## 5. Multitasking operating interface

Slide it right from the left side of the screen, Let go when Can see the running applications. We can enter the application, also can be deleted.



# Basic Operations

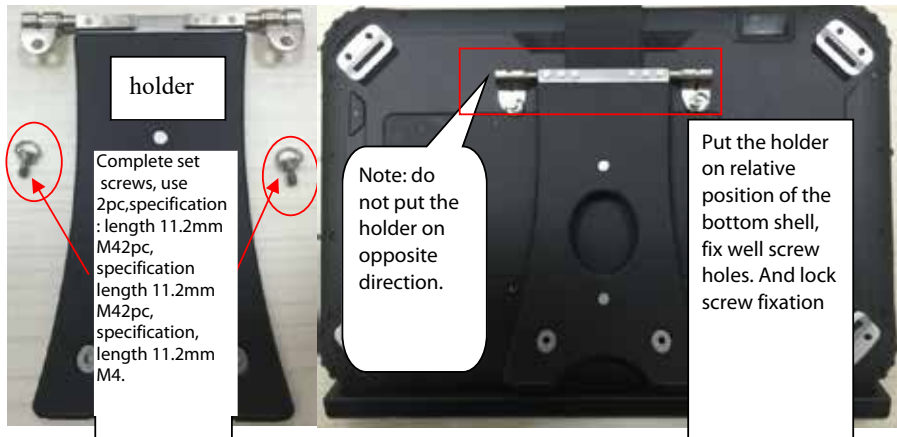
## 1.Sleep, restart and power off



# Operation guidance of accessories installation

## 1. Holder installation

Holder accessories and install way as below picture shows:



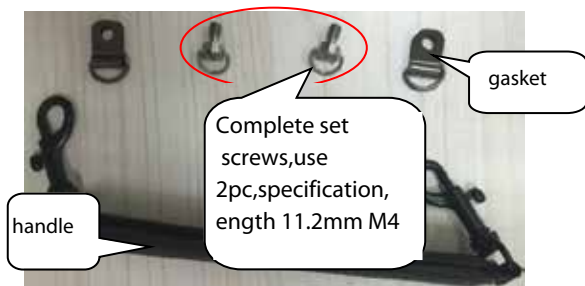
Pic 1

Pic 2

# Operation guidance of accessories installtion

## 2. Handle install

Handle accessories and install as below picture shows:



Pic 3



Pic 4

# Operation guidance of accessories installation

## 3. Keyboard installation

Keyboard accessories and install as below picture.



Pic 5



Pic 6



# Operation guidance of accessories installation

Overall effect picture



Pic 7

# Windows operating instructions of special function module

## 1. U-blox GPS

(1). The software bundled with this product includes software files subject to certain open .



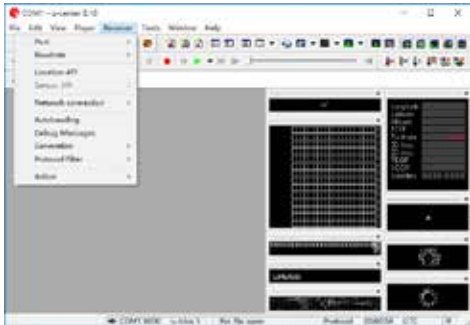
(2). Use power control tool and make it power on.



# Windows operating instructions of special function module

(3). Open the software, chose receiver, and chose port again, click COM1.

(4). In the same way for receiver, chose Baudrate, click 9600.



(5). As below picture, double click the satellites model picture to enlarge.



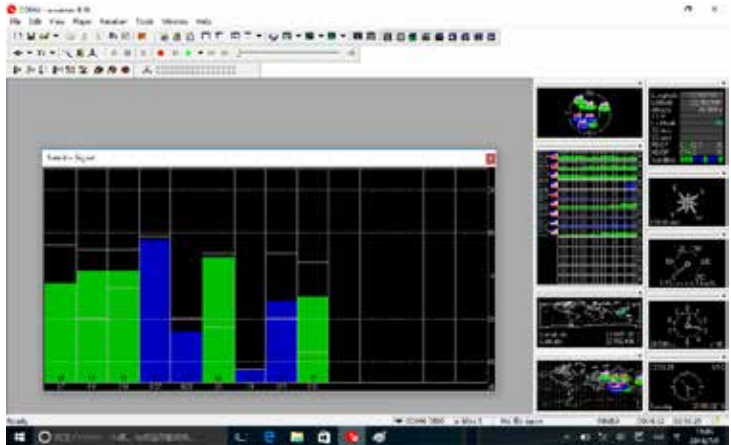
# Windows operating instructions of special function module

(6). The blue colors are the satellites that searched, green color are effective satellites. The numbers in the right are signal value.

## Standard:

Environment: in open field, no metal in around, no obstacles. Sunny weather, no clouds covering.

Condition: can see satellites above 12 pieces, effective satellites above 10 pieces. Have 2-3 pieces satellites value reach to above 40 dB.



# Windows operating instructions of special function module

## 2. 1D module operation

(1). Copy the serial assistant ( SPU) on the desktop.



(3). Install the opened software, chose corresponding serial port, Baud rate chose 9600.

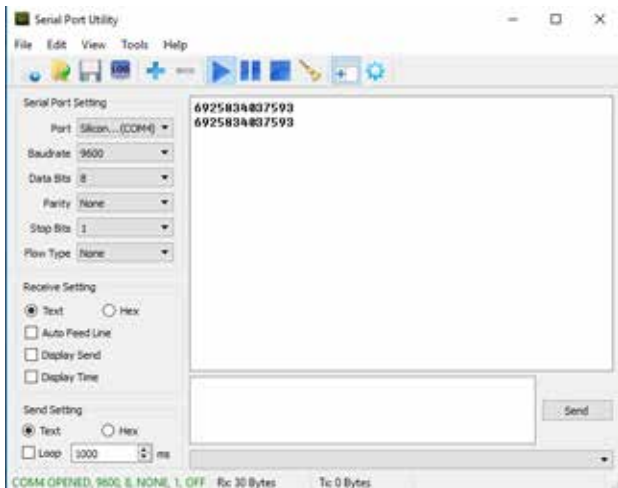
(2). Use power control tool and make it power on.



(4). Click start key, press the scanner key on the PAD and start to scan.

# Windows operating instructions of special function module

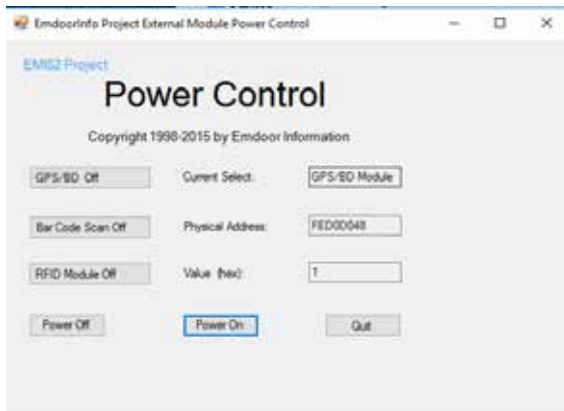
(5). Ok ! after scan successful, the result will show on the frame automatically.



# Windows operating instructions of special function module

## 3. 2D module operation

- (1). Use power control tool and make It power on.
- (2). Create a text document.



# Windows operating instructions of special function module

- (3). Open the text document, click the blank place, press the scan key on the PAD and start to scan.
- (4). The result of scanner will show automatically.





# Product accessories



Strap



Battery



Strap



Europe standard adaptor



US standard adaptor



three-in-one adaptor



Car holder 1



Car holder 2



Car holder 3





