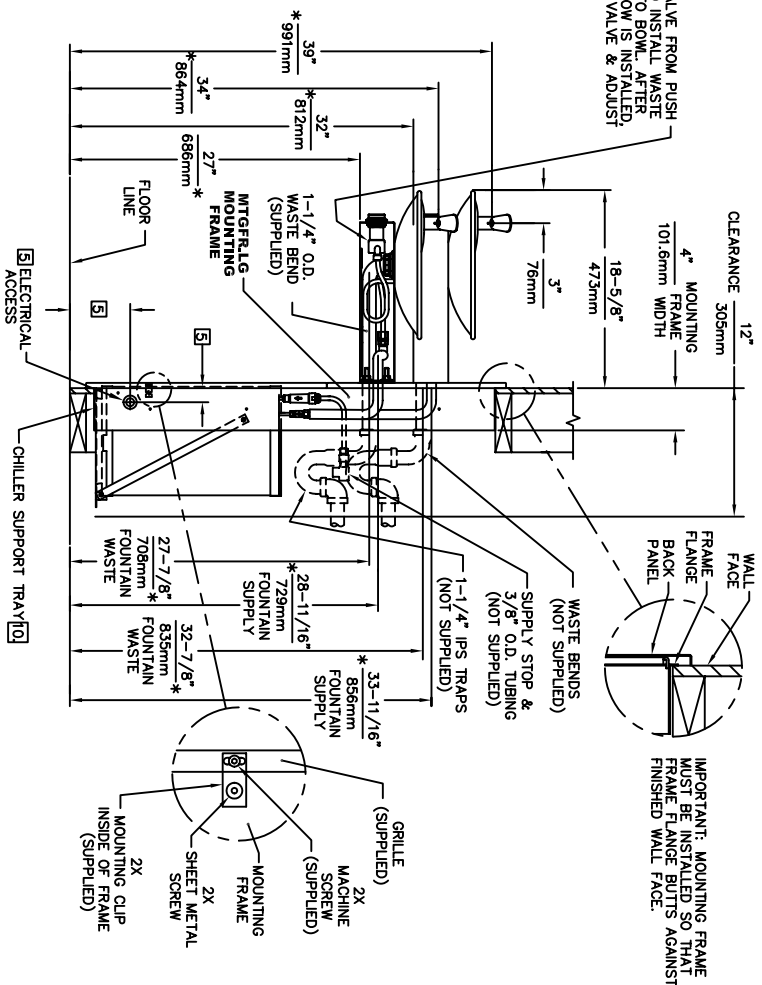
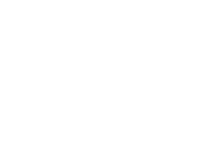
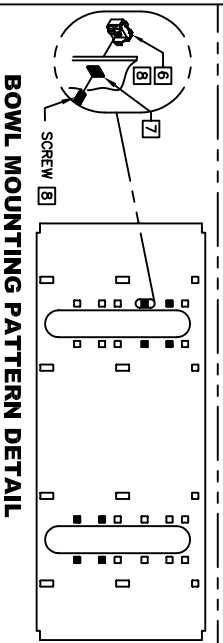


REMOVE VALVE FROM PUSH BUTTON TO INSTALL WASTE ELBOW ONTO BOWL. AFTER WASTE ELBOW IS INSTALLED, REINSTALL VALVE & ADJUST FLOW

- NOTES:**
1. HOLD ROUGH-IN DIMENSIONS  $\pm 1/8"$  (3.2mm).
  2. WHEN INSTALLING THIS UNIT, LOCAL, STATE, OR FEDERAL CODES SHOULD BE ADHERED TO. FOR DIMENSIONS (LOCATIONS), WASTE AND SUPPLY REQUIREMENTS OTHER THAN SHOWN, DIMENSIONS MARKED (\*) MUST BE ADJUSTED ACCORDINGLY.
  3. INSTALLER MUST PROVIDE TRAP FOR PROPER INSTALLATION.
  4. REFER TO 5874SS OPERATION AND MAINTENANCE MANUAL FOR PUSH BUTTON AND VALVE INSTALLATION/MAINTENANCE INSTRUCTIONS.
  5. REFER TO MTRFR LG INSTALLATION DRAWING FOR ROUGH-IN DIMENSIONS.
  6. INSERT 5/16" - 18 PANELE INSERTS FROM OPPOSITE SIDE AT LOCATIONS SHOWN BY SPRENGED HOLES FOR RIGHT AND HIGH FOUNTAIN ON THE LEFT AND FOUNTAIN ON THE RIGHT AND THE HI FOUNTAIN ON THE LEFT. USE OPPOSITE HOLES FOR HI ON RIGHT AND LOW ON LEFT.
  7. HOLE COMBINATION SHOWN BELOW IS FOR USE WITH LOW FOUNTAIN ON THE LEFT AND HIGH FOUNTAIN ON THE RIGHT. USE OPPOSITE HOLES FOR HIGH ON RIGHT AND LOW ON LEFT.
  8. TO CHANGE FOUNTAIN MFG. SCREW LOCATIONS, FIRST REMOVE SCREWS AND THEN SQUEEZE CLIPS ON NUT RETAINER TO POP OUT. SNAP INTO NEW POSITIONS AND RE-ASSEMBLE SCREWS.
  9. IMPORTANT: A L.H. LOW (OPTIONAL) CONFIGURATION WILL REQUIRE THE MTRFR LG BACK PANEL AND THE ADJUSTED DIMENSIONS SHOWN (\*) MUST BE REVERSED.
  10. ALIGN HOLES IN CHILLER SUPPORT TRAY WITH HOLES IN FRAME AND FASTEN WITH #10 SHEET METAL SCREWS.



IMPORTANT: MOUNTING FRAME MUST BE INSTALLED SO THAT FRAME FLANGE BUTTS AGAINST FINISHED WALL FACE.



**Haws**

1455 KLEPPE LANE  
SPARKS, NEVADA 89431  
(775) 359-4712 FAX (775) 359-7424  
EMAIL: HAWS@HAWSCO.COM  
WEBSITE: WWW.HAWSCO.COM

MODEL(S)  
H1011.8/H1011.8HPS

DRINKING FOUNTAIN

SCALE: 1/16"

DRAWING TYPE: INSTALLATION

SIZE: A

SHEET: 1 OF 1

PART NUMBER: 0002080249.D  
DRAWING NO.: REV 13135A00 1/6

EON NO. REVISED PER BY: MODEL(S)  
DRAWING: EONK 4483 HM  
DATE: 07/07  
CHKD: H1011.8/H1011.8HPS  
APPROVED: DATE: SCALE: 1/16"