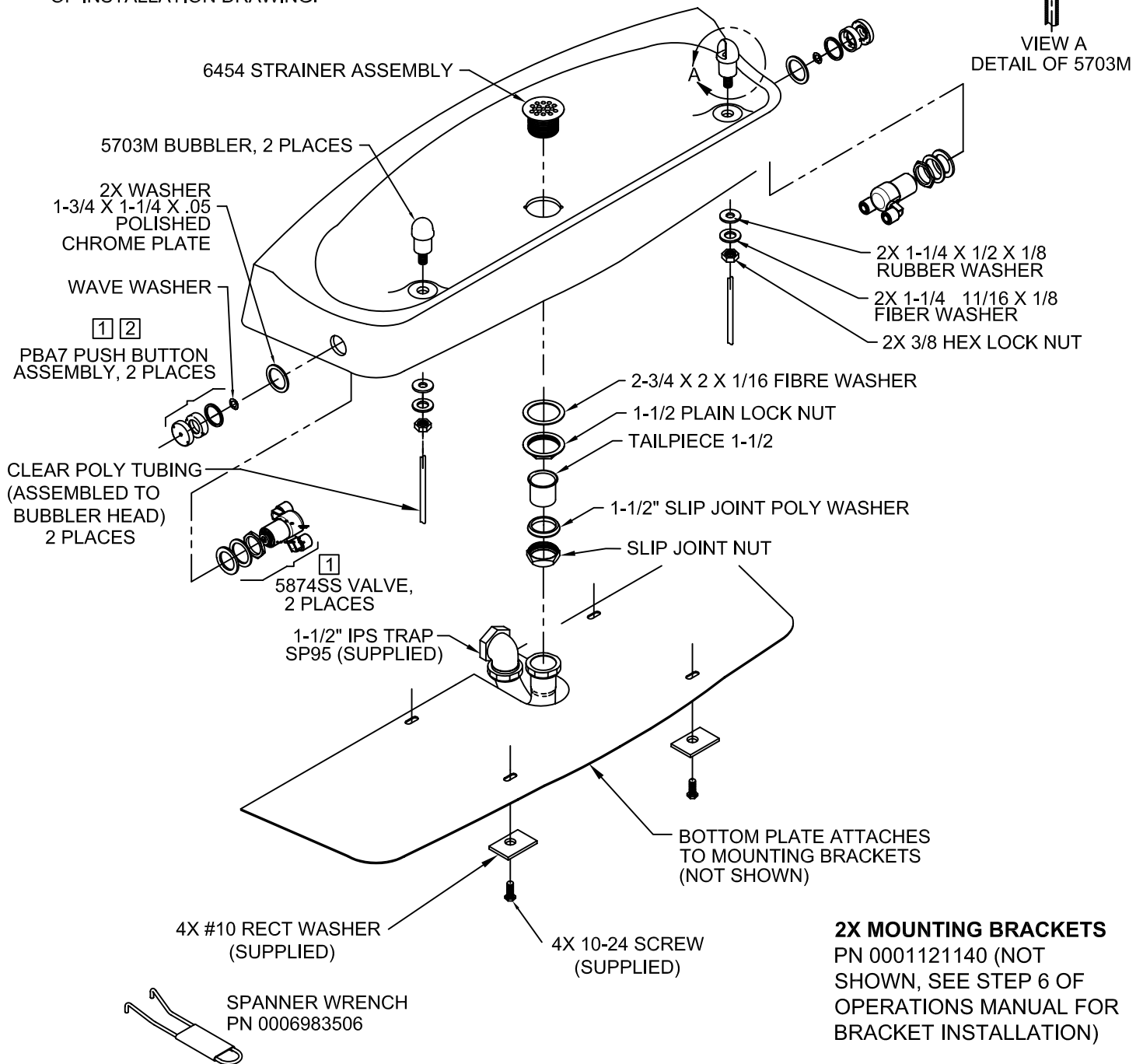
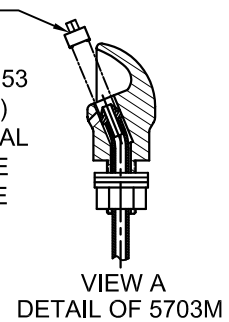


# PARTS BREAKDOWN

**NOTE:**

1. REFER TO 5874SS/VRK5874 OPERATION AND MAINTENANCE MANUAL FOR INSTALLATION INSTRUCTIONS.
2. MUST APPLY 1 DOT OF LOCTITE 222MS THREADLOCKER ON FEMALE THREADS OF PUSH BUTTON. SEE 5874SS OPERATION AND MAINTENANCE MANUAL (PAGE 5 OF 5) FOR PROPER APPLICATION PROCEDURE.
3. FOR TUBING ROUTING AND LENGTHS SEE SHEET 2 OF INSTALLATION DRAWING.

DRIVER,  
NOZZLE  
.25 HEX  
PN 0002082253  
(OPTIONAL)  
FOR REMOVAL  
OF NOZZLE  
WITH TUBE



**2X MOUNTING BRACKETS**  
PN 0001121140 (NOT  
SHOWN, SEE STEP 6 OF  
OPERATIONS MANUAL FOR  
BRACKET INSTALLATION)

		1455 KLEPPE LANE SPARKS, NEVADA 89431 (775) 359-4712 FAX (775) 359-7424 E-MAIL: HAWS@HAWSO.COM WEBSITE: WWW.HAWSO.COM	
		ECN NO. REVISED PER BY: ECN: 4093 HM DATE: 06/26/97 CHKD.: DRAWN: D. OLLOM APPROVED: DATE:	MODEL(S) 1430 TWO BUBBLER FOUNTAIN
<b>WHEN ORDERING PARTS PLEASE SPECIFY YOUR MODEL NUMBER</b>		SCALE: 1:5.5 DRAWING TYPE: PARTS BREAKDOWN	SIZE: A SHEET 1 OF 1