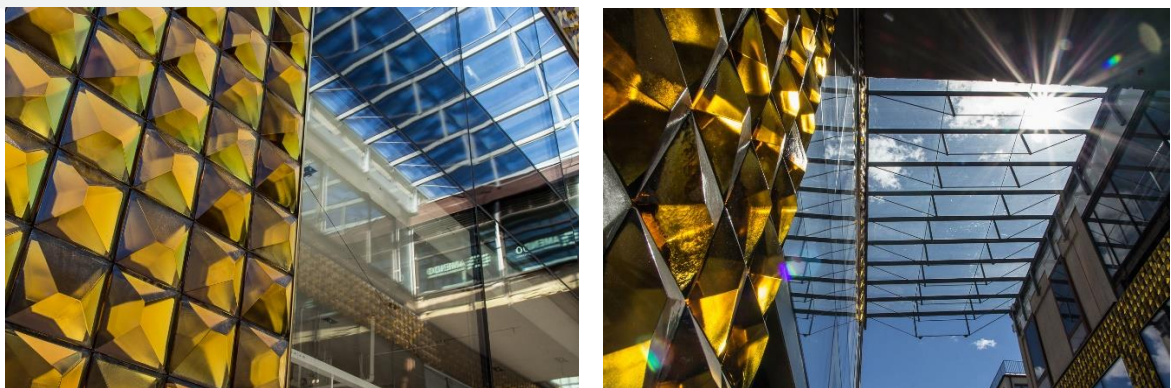


Additional production line at Edgetech Germany

From the spring of 2016 onwards the Super Spacer® TriSeal™ Premium Plus for the European market will be produced in Heinsberg. Edgetech Europe GmbH is expanding its production capacities at its headquarters in western Germany through the addition of a line for the passive house champion from the Super Spacer® product range. The flexible spacer for manual application fulfils three requirements at once for the state-of-the-art glass architecture: it is freely mouldable, energy efficient and durable.



Source: <http://www.skandglas.se/ongoing/kompassen/>

Edgetech Europe GmbH has two good reasons to celebrate: May 2016 marks the 5th anniversary of the opening of the Heinsberg facilities, at the same time a new production line for Super Spacer® TriSeal™ Premium Plus gives the opportunity to supply European customers even faster. Especially for glazings aside from standard sizes the flexible mouldability of this silicone foam spacer provides significant advantages as an innovative and exclusive showcase project that was now completed in Gothenburg after a two years development period and one year of construction work, emphasizes.

Exclusive showcase project at Kompassen in Sweden

In the case of the Kompassen shopping centre the architectural firm Ågren Arkitekter had so to speak been issued with a license to transcend boundaries by the investor Vasakronan. The facade in particular should become a hallmark that is visible from afar of the new mall. However, there was one condition attached to the carte blanche: only tried and tested and demonstrably durable materials may be used for the construction work as obviously when constructing a shopping centre the balancing act between aesthetics, functionality and economy is the thing that must be pulled off first and foremost. Architect Magnus Åhs knew what effect he wanted to achieve with his design, but his vision of sunlight reflected and refracted in the facade was only realised through a concerted approach of all the companies involved in this project.

Nominated for the Swedish Glass Prize “Glaspriset 2016”

The Swedish building envelope specialist, Skandinaviska Glassystem, consulted the glass artist Sofia Bergman and the idea of applying amber cast glass in an asymmetrical pyramid shape onto the facade was born. The cast glass parts were manufactured in the glassworks of Målerås Glasbruk that is situated in the middle of the famous “Kingdom of Crystal” in Småland. Each of the total of 5,700 glass pyramids has a base area of 20 by 20 centimetres and weighs more than three kilograms. In a similar way to a conventional insulating glass unit they are applied to the mirror glass that is secured invisibly from the outside to the sandwich facade. The unique glass architecture was nominated for the Swedish Glass Prize “Glaspriset 2016”.

Swedish glass tradition meets innovation

The perfect symbiosis between Swedish glass art and state-of-the-art flat glass technology can be seen in the finished facade. However the successful final results could certainly not have been anticipated at the start of the project and hence the responsible project manager at Skandinaviska Glassystem, Erik Stening, found appreciative words for the team: “Only the close cooperation of all the parties involved facilitated the perfect matching of each individual component to form a unique overall work of art which we can all rightly be proud of.” Hence Edgetech was, for instance, proposed as a partner by the sealing specialist Sika, due to the fact that Super Spacer® TriSeal™ Premium Plus was ideally suited to the manufacture of the small mirror glass units, supplied by KS Glas.

About Edgetech Europe GmbH

Super Spacer® flexible, foam-based spacer systems from Edgetech guarantee a warm edge on insulating glass windows, extensively reducing heat exchange and condensation and contributing to the durability and energy efficiency of the window. On average, worldwide, more than 300 million metres are sold annually in over 90 countries.

Edgetech Europe GmbH, located in Heinsberg Germany, is a fully-owned subsidiary of Quanex Building Products Corporation, a leading global provider of energy-efficient window and door profile systems, flexible insulating-glass spacers, sealants for solar modules, wooden floors and ceiling profiles, as well as window and door grilles, with its head offices in Houston, Texas. Edgetech Europe GmbH is a sales location for the markets of continental Europe and one of the three worldwide Edgetech production plants, with a total of 450 employees and 16 extruders.

For more information about Super Spacer® spacer systems and Warm Edge Technology from Edgetech visit our website at www.superspacer.com.

Contact

Press Agency

Interview International

Ingrid Hecht
15, rue Martin Luther
67000 Strasbourg
France
Tel.: +33 (0)388155588
E-Mail: info@interview-international.fr

Edgetech Europe GmbH

Johannes von Wenserski
Prokurist (holder of a commercial power of attorney)
Gladbacher Strasse 23
52525 Heinsberg
Germany
Tel.: +49 (0)2452.96491-0
Email: info@edgetech-europe.com
www.superspacer.com