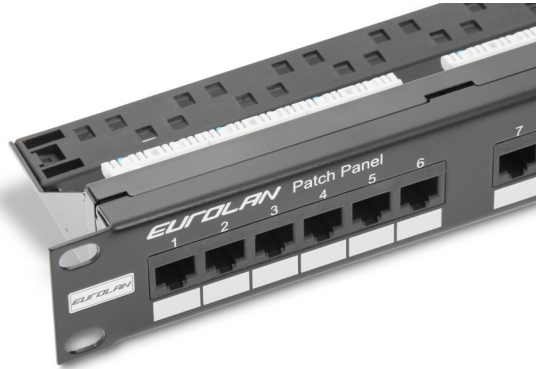


EUROLAN Patchpanel

19" UTP 24xRJ45 C5e



Ordering information

Part number	E-number	Description
27B-U5-24BL	5127827	Eurolan patchpanel 19" C5e UTP 24port 1U

Technical information

Type	100 MHz-required	100 MHz-tested
Attenuation (pair/pair)	0,4	0,15
Next (pair/pair)	43	45
Return Loss	20	30

Dimensions and mass (mm and g)

	Width	Length	Height	Weight	Price unit	Pcs/ package	Package
Unit	80	482	42	900	Pcs	1	Box

- ✓ Loaded patchpanel 24xRJ45
- ✓ Verified to 100 MHz (1 Gbit Ethernet)
- ✓ Termination interface is 110
- ✓ 19" mounting, 1U
- ✓ Conforms to specifications according to EN 50173-1 Class D, ISO/IEC 11801 2nd Edition and IEC 332-1
- ✓ Follows the RoHS directives
- ✓ Made of black painted steel.