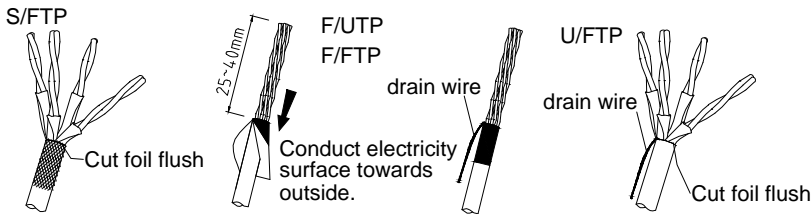
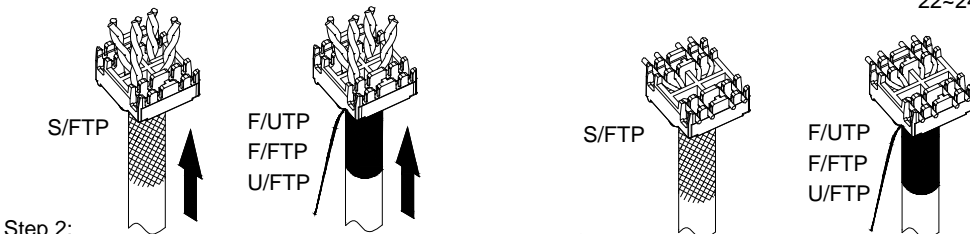


# Instruction Sheet



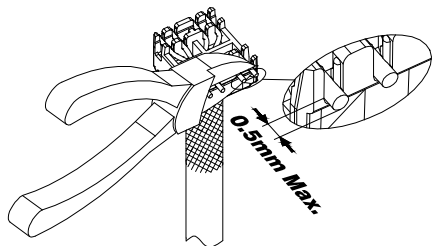
**Step 1:**  
Strip the cable for minimum 25 mm, pull the foil or braided shield back over the jacket and wrap the drain wire around the shield.

**NOTES:**  
IDC is suitable for 22~24AWG wires.

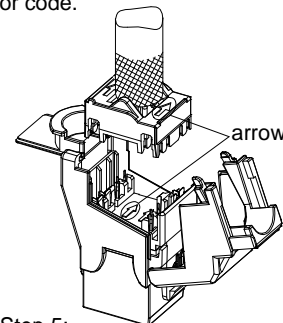


**Step 2:**  
Insert the wires into the cap through the holes.

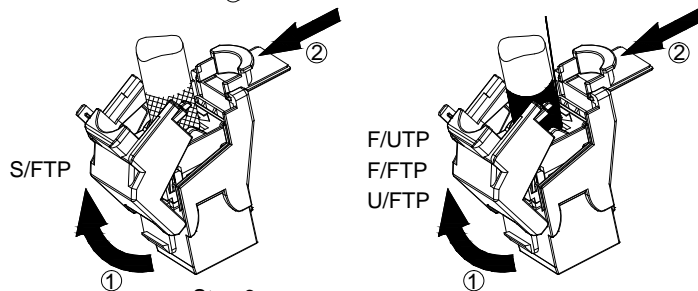
**Step 3:**  
Lay the wires to their correct positions based on the color code. (T568A/T568B)



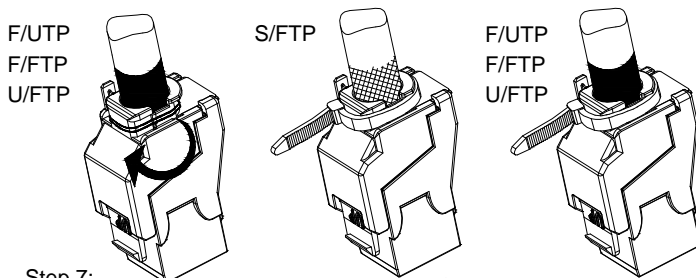
**Step 4:**  
Cut the excess wires off. The tips of the wires should protrude no more than 0.5mm.



**Step 5:**  
Put the cap on the IDC tower. The arrows on the jack and the cap should face the same direction. Put the cap into position.



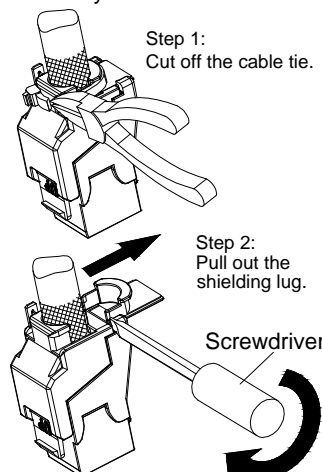
**Step 6:**  
Close the jaw until it clicks into place. See circle ①. See circle ②; insert clip.



**Step 7:**  
The drain wire should be wrapped around the strain relief as shown to ensure 360° shielded.

**Step 8:**  
Fix the cable tie to the shielding lug.

**Disassembly Instruction:**



**Step 1:**  
Cut off the cable tie.

**Step 2:**  
Pull out the shielding lug.

**Step 3:**  
Insert the screwdriver into the slot and rotate it to open the jaw.