

SMART STORAGE

BB30 MINIGARAGE



Easy to use – Easy to place!

Doomans mini-garage is designed with functionality and ease of use in focus and built with the highest quality.

The BB30 is designed for most types of scooters, electric wheelchairs and permobiles.

The garage offers weatherproof and secure storage.

THE ORIGINAL SINCE 1990

 **DOOMAN**
FOR A SIMPLER LIFE



- SMART STORAGE -



Easy to use – Easy to place!

- + Holds both Scooter and a walker
- + Offers weather, damage and theft protection
- + Easy to install and easy to move
- + Safe and easy to use with remote-control
- + Available in standard colours Grey and Green



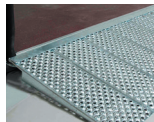
REMOTE-CONTROL

Open and close the garage with a simple push of a button



LEDLIGHT

Turns on and off automatically



ACCESS RAMP

For a smooth entry and exit

FUNCTION - QUALITY - DURABILITY

BB30 is developed in close collaboration with users and clients. After almost 30 years in the market it is no coincidence that Dooman is the market leader. The garage is made of durable, maintenance-free composite material and equipped to withstand weather, wind and tough climate conditions. In addition, it is easy to clean.

Dooman mini-garage is user friendly, spacious and has been tested for a long time. Developed to be both safe to operate and reliable.

SPECIFICATIONS

230V wall socket and shelf for eg. charger
Release for manual opening in case of eg. power failure
CE-marked and compliant with Machinery Directive 2006/42 / EC
Inner width 150 cm, inner depth 173 cm



PLEASE CONTACT US!



+46-31-69 68 50

info@dooan.se - www.dooan.se

 **DOOMAN**
FOR A SIMPLER LIFE



- THE ORIGINAL SINCE 1990 -