



Universal manual Bonder & Tester 5600

Bond / Tester System

Testheads	Pullheads – 100cN – 5000 cN Shearheads – 500cN – 5000 cN Tweezerhead – 100cN
Bondheads	5610, 5630, 5632, 5650, 5650HR

Bonder / Tester Base

Axes

- Working area X/Y-axis 100x100mm
- Step resolution 0,25µm
- Repeatability <2µm

Hardware

- Dual Core PC, 1,6 GHz processor,
- 4 GB RAM, Ethernet, 4x USB-Hub Front
- Firewire CCD colour camera 1,4 MPixel
- Network-capable with TCP / IP server

Software

- Statistics such as mean value, standard deviation, trend, cp, cpk, etc. Based on SQL Database

Speed

Test speed from 0.2 to 5mm/s

Dimensions

W x D x H – 70 x 65x 70 cm, weight approx. 80kg

Connections

100-240 VAC, 1 Phase, 50/60 Hz, max 500 VA
Ø 6mm standard vacuum tubing

The 5600:

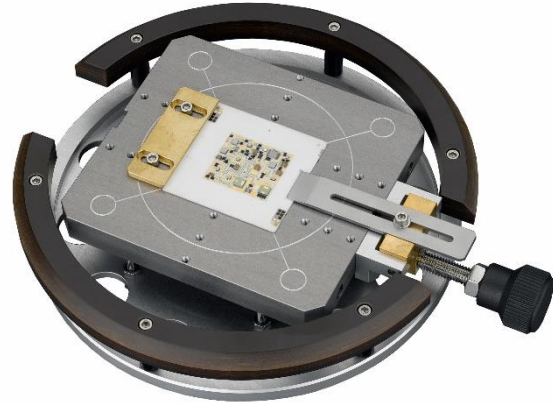
The manual bond tester 5600 complements F&S Bondtec Semiconductor GmbH die- and wire- bonders. The PC controlled moving table allows any number of bonds to be tested manually from a stored program.

Results can be analysed and output immediately or exported in a number of data base formats for subsequent analysis as desired. Powerful extended capabilities enable measurements such as force/time curves to be made and deliver more data about the quality of the bond tested.

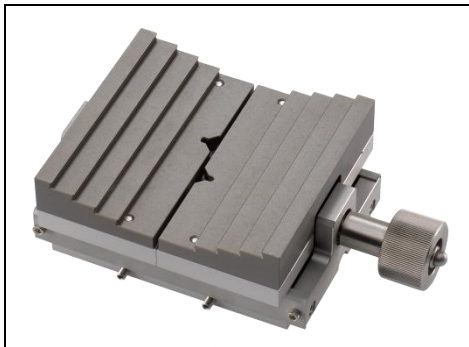
Exchangeable measurement cartridges ensure rapid conversion to different force ranges. The calibration curves of all measurement cartridges are stored internally; additional heads for shear, peel and tweezer testing with customer-specific tools and jaws are available.

Workholder

Standard-Workholder
for parts up to 4x4"
with Vacuum und mechanical clamping



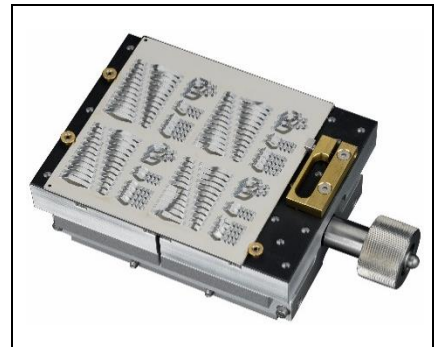
Optional:



workholders up to 4x4"
with jaws



TO workholder with
mechanical clamping



4x4" workholder with .
rubberized surface and
mechanical clamping

F&S Bondtec Semiconductor GmbH

Industriezeile 49a

A-5280 Braunau am Inn

Tel.: +43-7722-67052-8270

Fax: +43-7722-67052-8272

Mail: info@fsbondtec.at

Web: www.fsbondtec.at

