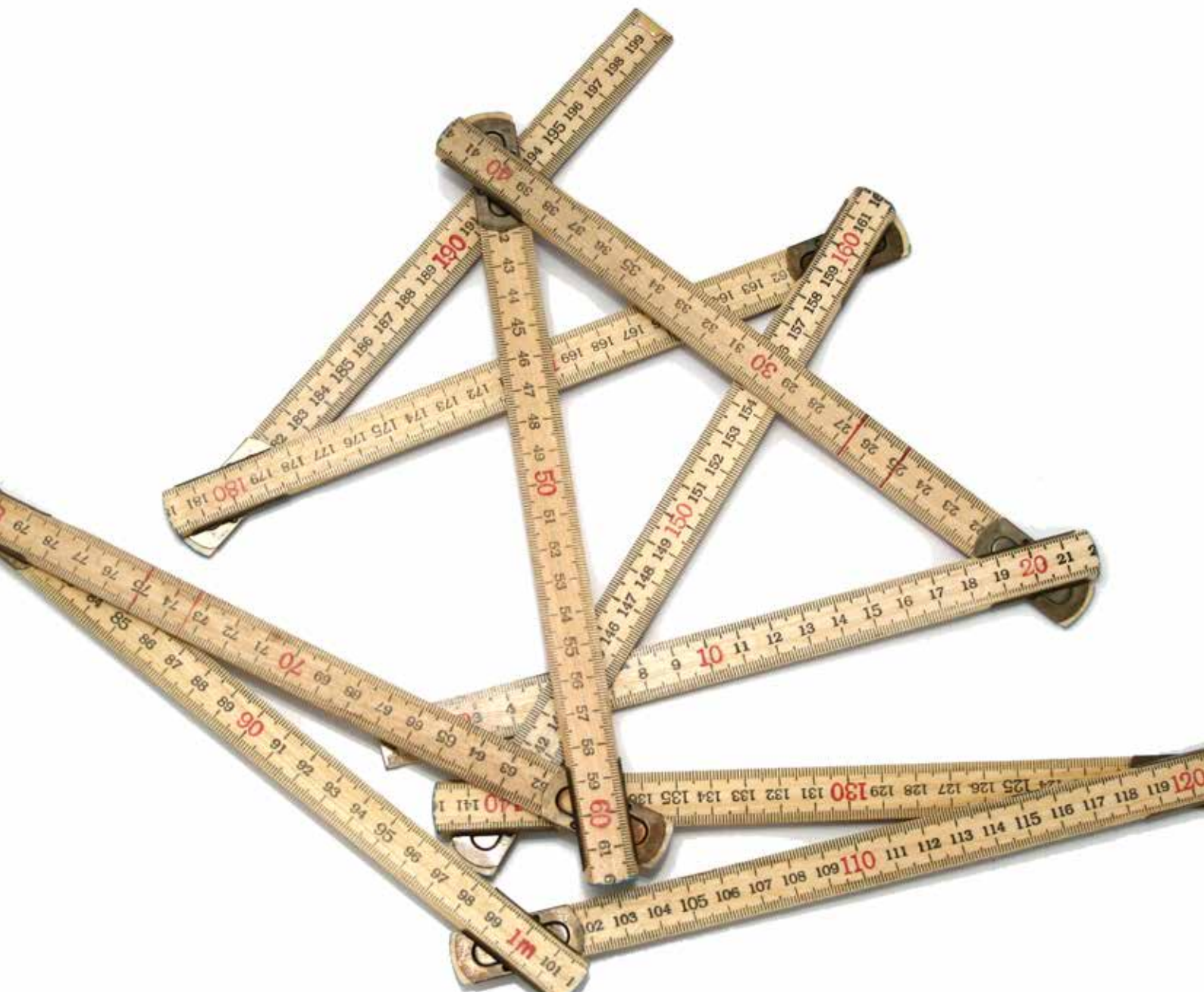


ClearView

Retractable screen solutions

Installation manual

Version 2.2 en, 2016-02-22



Congratulations on your new screen door/window from ClearView Sweden. This manual will help you install your unit and should you have any questions please don't hesitate to contact us by phone or e-mail. **Please read the entire manual before you start your installation!**



Your package should contain the following * :

- Housing with mesh and pullbar
- Bag with handles and screws
- 2 screws, ca 7 cm
- 2 screws, ca 4,5 cm
- 4 or more short screws, ca 2 cm
- 2 plastic screwhead covers thick
- 2 plastic screwhead covers thin
- 3 rubber stops
- 1 magnetic strike plate
- 1 magnet

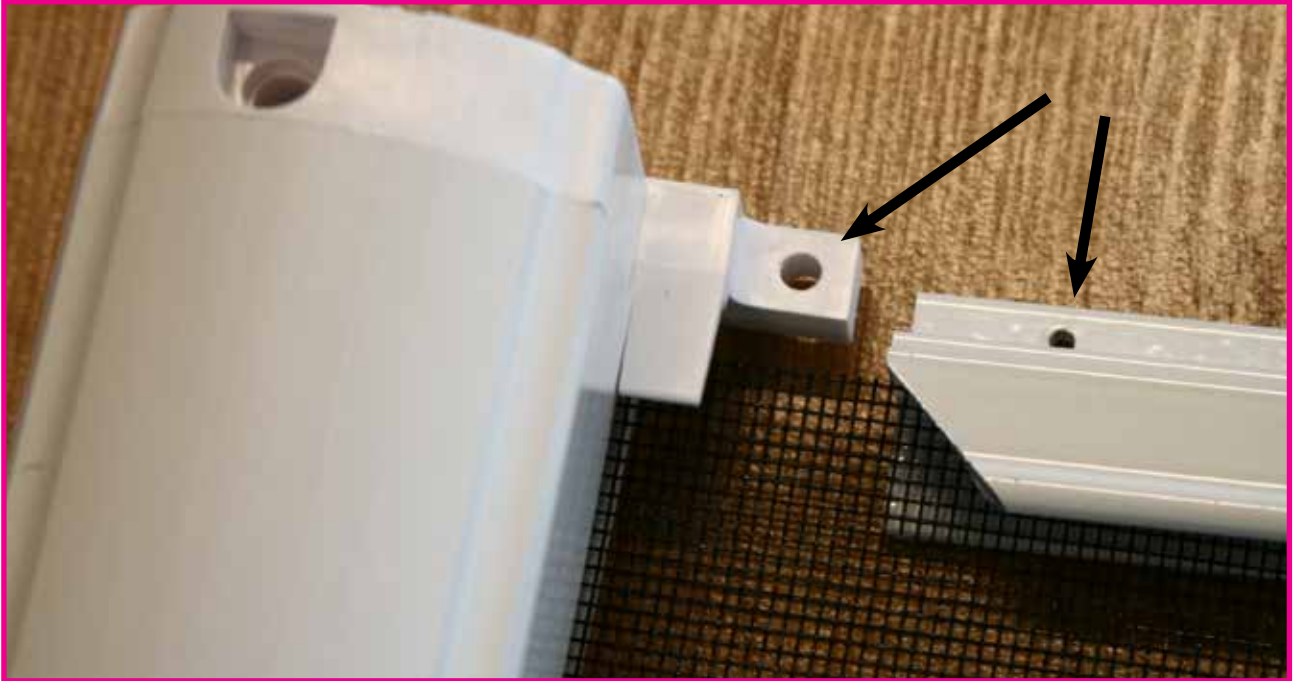
* May vary depending on your specific purchase







Before you install the housing, lay it on the floor and try to slide the rail into the housing as seen below. Please take notice of the diagonal cut in the rail.



The picture below shows how the rail and housing connect to each other. Take notice of the pre-drilled hole in the rail. This should line up with the hole in the plastic end of the housing.



The housing should be a few mm shorter than needed. If you like you can raise the housing by placing something beneath it. This is optional.



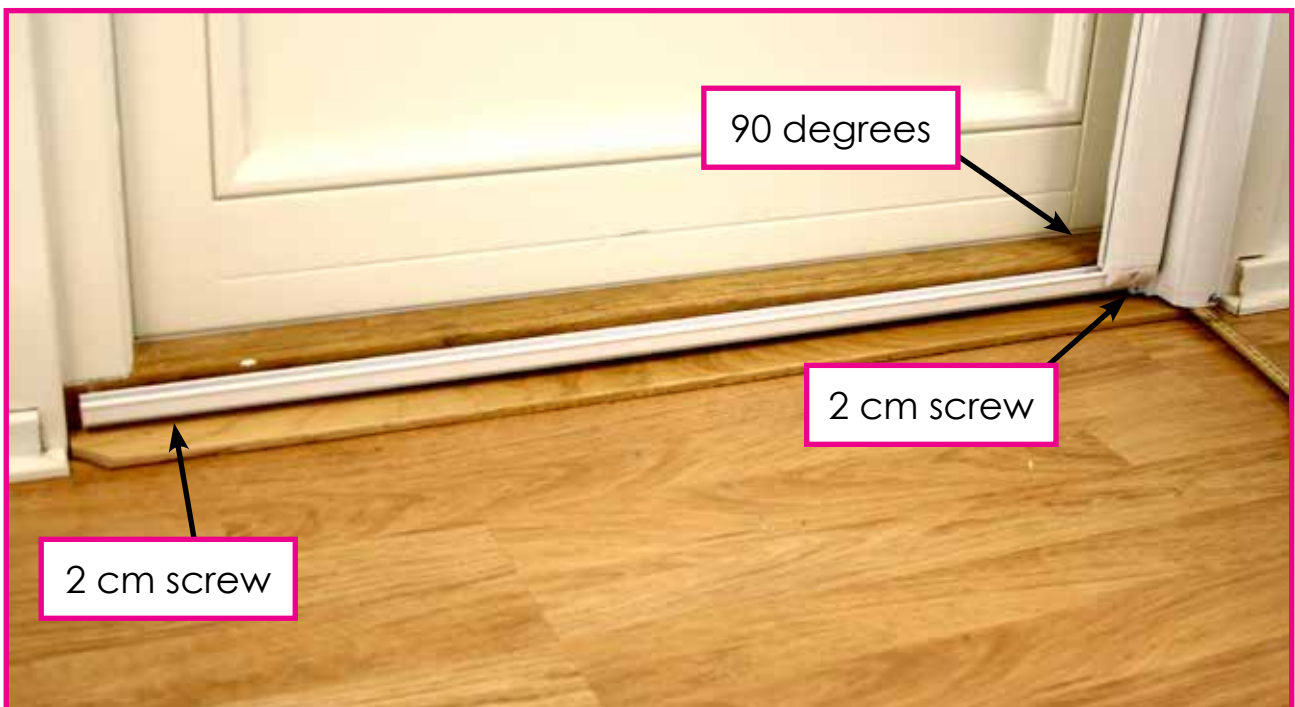
Screw in one 7 cm screw almost all the way in.



Screw in the second 7 cm screw almost most of the way.



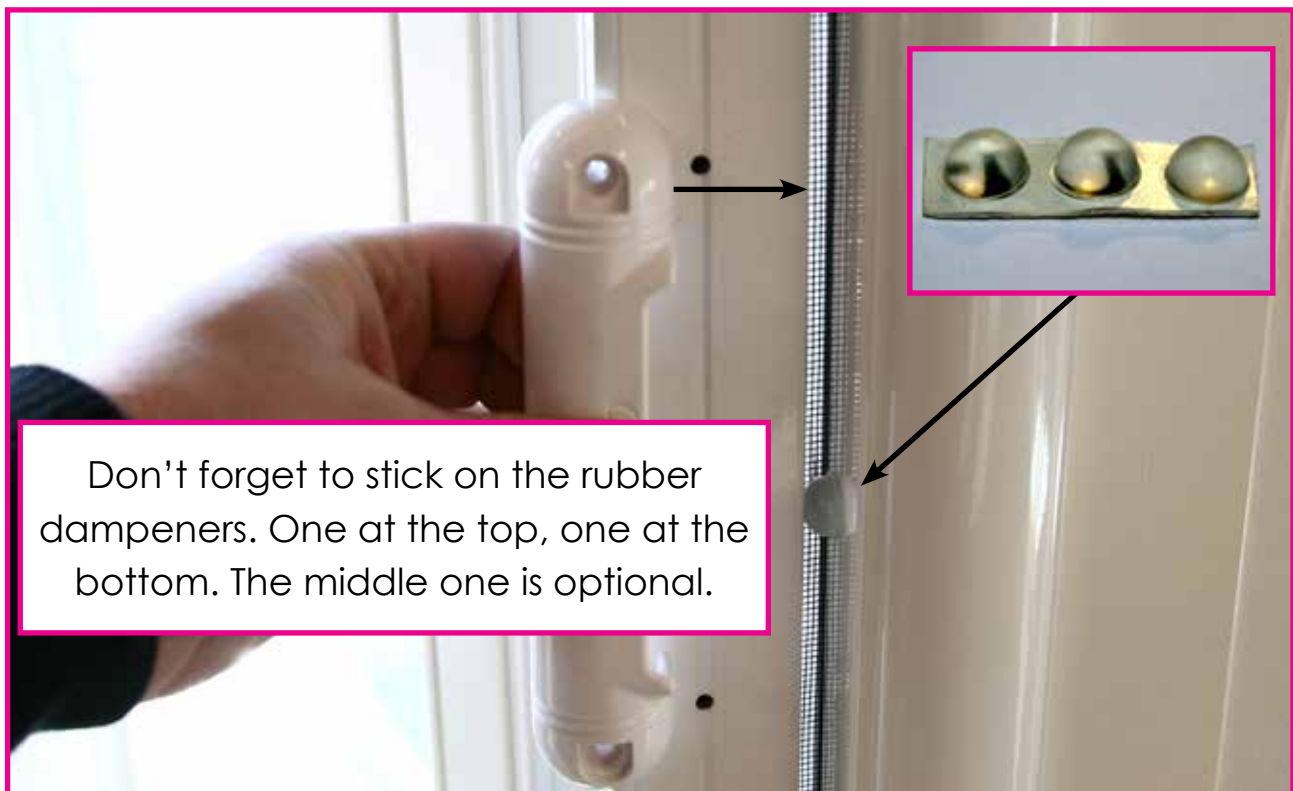
Slide in the bottom rail through the pullbar so the pre drilled hole lines up as you practiced earlier on the floor. It's important that the end of the rail with the diagonal cut is connected to the housing. Next, screw in the two 2 cm screws as per below, but only half way. **Remember to make sure that the bottom rail and housing are at 90 degrees.**



Slide in the top rail. Once this is done you can screw all 6 screws all the way in. HINT - to set the height of the top rail, have a friend pull the screen door over to the other side.



The next step is to drill two holes for the handle. Hold up the handle with holes in it at an appropriate height. Place the edge of the handle at the edge of the pullbar (see arrow below). Your holes may not be in the groove as shown below and this is OK. Mark the two holes and drill all the way through the pullbar with a 5 mm drill bit. **NOTE! Handles are optional when installing windows.**



Drill 2 holes straight through the pullbar using a 5 mm drill.



Use the 4 cm screws to install the handles. Don't forget to cover the screws with the thin plastic covers.



In the plastic bag containing the magnet there is a plastic back piece/ spacer. Hold this up on the pullbar beneath the handle. Mark out two holes in the groove on the pullbar. **These screws will NOT go through both sides of the pullbar. Use a 2 mm drill.**



Close the screen door so you can see where to mount the metal strike plate. Mark out two holes and screw fast the strike plate, see below.



The picture below shows how the magnet and strike plate work together.



Don't forget to lubricate the rails with a silicone spray.