

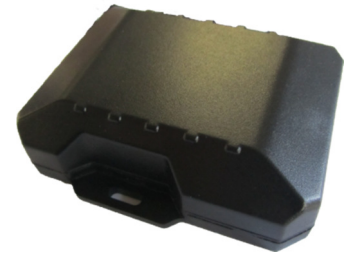
PRODUCT FACT SHEET

VT1330

Overview

The VT1330 is an economical, fully-sealed vehicle tracking product designed for easy and reliable installation in recreational vehicles and assets with outdoor exposure. The VT1330 is an ideal solution for asset monitoring for motorcycles, snowmobiles and other outdoor recreational vehicles.

Includes an internal GPS and GPRS modem to record GPS positions together with trip information for real-time tracking, data is recorded on an event basis with driver violations and detailed trip information. Customers are able to remotely monitor performance in real-time or retrospectively.



Features

The advanced firmware allows for monitoring external conditions and supports configurable exception-based rules, continuously monitoring the vehicle environment and responds instantaneously to pre-defined threshold conditions related to time, date, motion and location.

General Information	
Communication	Packet data (GPRS) and SMS based messaging
	Internal GSM
	Over-the-air firmware downloads
	Automatic, over-the-air unit configuration on power-up
	20,000 buffered messages for data logging during coverage loss.
Location	High sensitivity GPS (-162 dBm tracking)
	Internal GPS antenna
Events	3-axis accelerometer for motion and tilt alerting
Power	Low power modes
	Voltage monitoring and low battery notification
	Internal 700 mAh back-up battery
Enclosure	Water resistant

Technical Specifications

General Specifications	
Communication modes	GPRS packet data and SMS
Location technology	50 Channel GPS (with WAAS)
Operating voltage	12 and 24 volt vehicle systems

GPS Specifications	
Location technology	50 Channel GPS (with SBAS SBAS: WAAS, EGNOS, MSAS, GAGAN)
Location accuracy	2.0 meter CEP (with SBAS)
Tracking sensitivity	-162dBm
Acquisition sensitivity	-147dBm
AGPS capable	Yes
Cellular Specifications	
Data support	SMS, GPRS (UDP)
Cellular/PCS	FCC – Parts 22,24;PTCRB
GPRS	Up to class 12
Quad-band	850/900/1800/1900 MHz
Output power	850 (Class 4) 2W ,900 (Class 4) 2W 1800 (Class 1) 1W, 1900 (Class 1) 1W
Electrical Specifications	
Operating voltage	6-32 VDC
Power consumption	< 1 mA @ 12V (deep sleep) < 10 mA @ 12V (sleep on network) < 70 mA @ 12V (active standby)
Physical Specifications	
Dimensions	2.5 x 3.125x0.875", (63.5 x 80 x 23 mm)
Weight	3 oz., (85 g)
Environmental Specifications	
Operating temperature	-30 degrees to +75 degrees C
Storage temperature	-40 degrees to + 85 degrees C
Humidity	95 %RH @ 50 degrees C non-condensing
Shock and vibration	202G and 810F
EMC/EMI	SAR J1113;FCC-Part 15B
Connectors, SIM Access	
SIM access	Internal
Connection type	Moulded power harness
Mounting	
Standard tie-wrap or screw mount	