

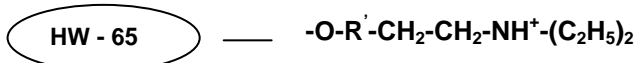


Im Leuschnerpark 4, 64347 Griesheim
 Tel: +49 6155-7043700 Fax: +49 6155-8357900
 E-Mail: info.tbg@tosoh.com
 Web: www.tosohbioscience.de

3604 Horizon Drive, Suite 100, King of Prussia, PA 19406, USA
 Tel: +1-484-805-1219 Fax: +1-610-272-3028
 E-Mail: info.tbl@tosoh.com
 Web: www.tosohbioscience.com

PRODUCT SPECIFICATION SHEET

Product Name: TOYOPEARL GigaCap® DEAE-650M (strong anion exchange resin)



Part Numbers:

22865	TOYOPEARL GigaCap DEAE-650M, 75 µm, 100 mL
22866	TOYOPEARL GigaCap DEAE-650M, 75 µm, 250 mL
22867	TOYOPEARL GigaCap DEAE-650M, 75 µm, 1 L
22868	TOYOPEARL GigaCap DEAE-650M, 75 µm, 5 L
21872	TOYOPEARL GigaCap DEAE-650M, 1 mL x 6 ea.
21873	TOYOPEARL GigaCap DEAE-650M, 5 mL x 6 ea.
21400	TOYOPEARL Column Holder

Product Description: TOYOPEARL chromatographic resins are comprised of a methacrylic polymer incorporating high mechanical and chemical stability. Resins are available as non-functionalised "HW" series resins for size exclusion separations, and derivatised with surface chemistries for alternative modes of chromatography such as ion exchange, hydrophobic interaction or affinity separations.

TOYOPEARL GigaCap® DEAE-650M chromatographic resins are designed for anion exchange chromatography. This chromatographic mode separates molecules on the basis of ionic interactions between the sample and the resin. The separation is usually accomplished in buffered aqueous solution with a gradient of increasing ionic strength. Alternatively, pH adjustment may be used for control of elution.

Formulation: Particulate resin (spherical), available in particle size (mean diameter):
 75 µm = "M" grade
 Supplied as slurry in 20 % ethanol (v/v).

Physicochemical Specifications:

▪ Appearance	White resin slurry which settles upon standing
▪ Particle Size Distribution (>80 % within range)	50 – 100 µm
▪ Exclusion Limit	6 x 10 ⁵ (Polyethylene Oxide)
▪ Mean Pore Diameter (Base resin)	100 nm
▪ Pressure drop across the column	max. 3 bar (recommended)
▪ Operating Linear Flowrate	normally 10 – 600 cm/hour
▪ Ion Exchange Capacity	0.2 ± 0.05 meq/mL
▪ Protein Adsorption Capacity	≥ 156 mg/mL BSA
▪ Bacterial Count	≤ 100 CFU/mL
▪ Endotoxin Concentration	≤ 10.0 endotoxin units/mL
▪ Pack sizes and type	100 mL, 250 mL, 1 L, 5 L, 50 L Packed in virgin Polyethylene container with Polypropylene cap.

▪ Resin Volume per Container	The indicated volume is the settled resin volume.
▪ Shipping Solvent	72 % (v/v) slurry in 20 % (v/v) ethanol
▪ Long Term Storage Conditions	20 % (v/v) ethanol
▪ Cleaning in Place / Sanitization	0.5 M NaOH or 0.1 M HCl
▪ Foreign Substance	not observed, no visual evidence
▪ Eluable Matter	< 0.2 %