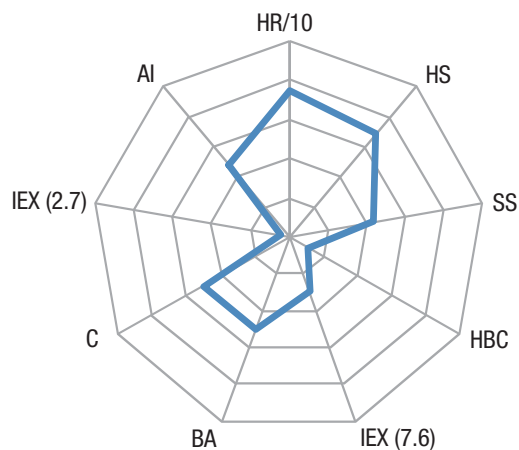
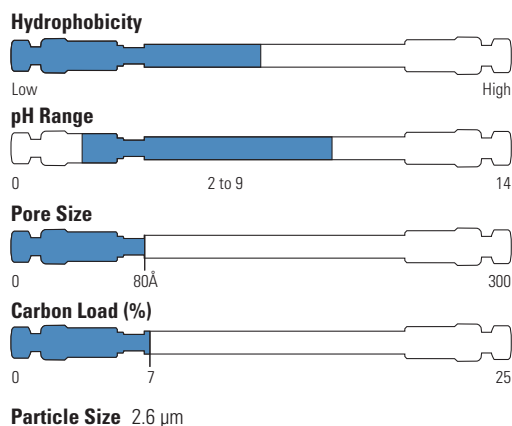


Accucore RP-MS



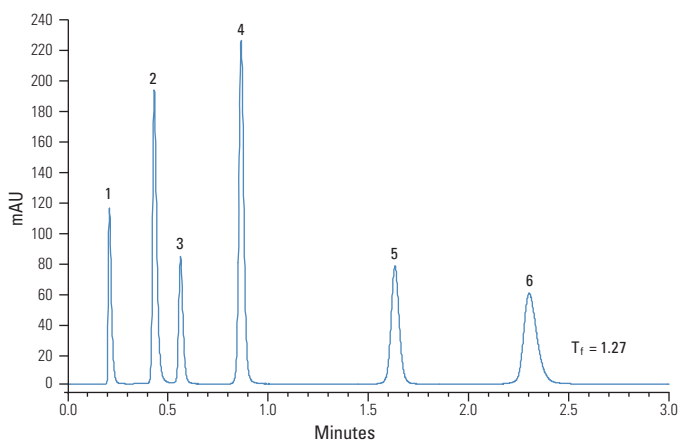
- Optimized for MS detection
- Excellent peak shapes
- Excellent combination of speed and efficiency

Accucore RP-MS uses an optimized alkyl chain length for more effective coverage of the silica surface. This coverage results in a significant reduction in non-hydrophobic interactions and thus highly efficient peaks with very low tailing.

RP-MS offers slightly lower retention than C18 and this combined with high efficiencies and low peak tailing make this the phase of choice for use with MS detection.

The selectivity offered by Accucore RP-MS matches that of C18 columns.

Bases



| | |
|---------------|--|
| Column: | Accucore RP-MS 2.6 µm, 50 mm x 2.1 mm |
| Mobile phase: | 65:35 (v/v) methanol/25mM potassium phosphate pH 7.0 |
| Flow: | 500 µL/min |
| Temperature: | 30 °C |
| Injection: | 1 µL |
| Detection: | UV at 215 nm |
| Backpressure: | 232 bar |
| Analytes: | 1. Uracil (<i>t_r</i>) 2. Propranolol 3. Butylparaben 4. Naphthalene 5. Acenaphthene 6. Amitriptyline |