

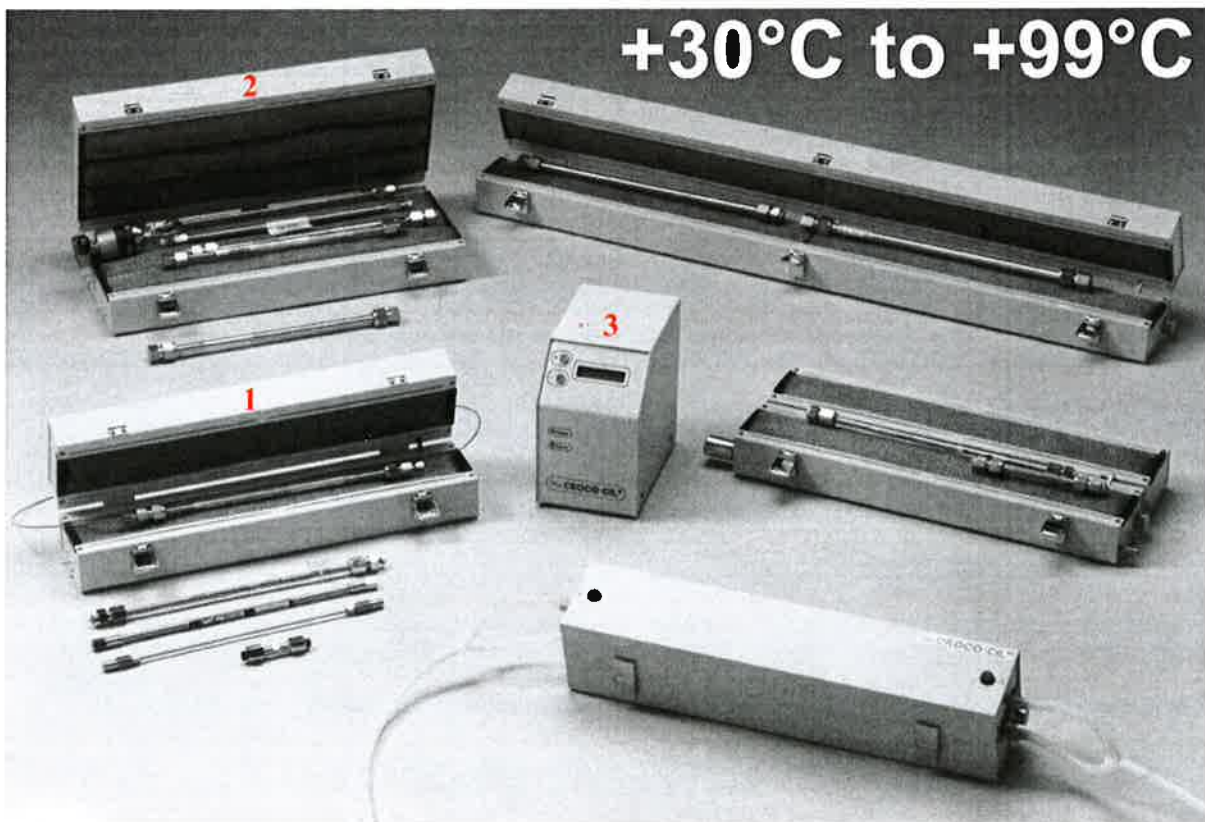
HPLC COLUMN HEATERS

CROCO-CIL[®]

+30°C to +99°C

CALIBRATION - VALIDATION FUNCTION

YOUR HPLC COLUMN AT THE TRUE TEMPERATURE

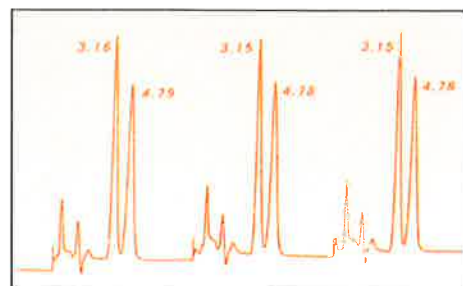


1 Oven 100 040 220P 2 Oven 100 040 220TW with Rheodyne Valve 7725i 3 Electronic regulator

⇒ LINEARITY

⇒ REPRODUCIBILITY

⇒ CALIBRATION FUNCTION (CIL)



REPRODUCIBILITY AT 75°C

Variation rate of retention time < 1%
Conditions : binary gradient

® = CLUZEAU INFO LABO registered Trademark

C O M P A C T P R A C T I C A L A C C U R A T E

VALIDATION / QUALIFICATION

... it's much more convenient to do it yourself ...

CROCO-CIL® = TEMPERATURE MASTER !

Do you want to validate the temperature of your HPLC column heater yourself ? Introducing a new concept for auditing your CROCO-CIL® column heater : **Calibration Intelligence Linearisation (CIL)**.

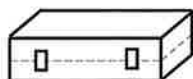
The electronic regulator incorporates a LCD unit which displays both pre-set temperature chosen by the user (increment of 1°C) and actual temperature measured inside the oven (increment of 0.1°C). All CROCO-CIL® column heaters include the automatic temperature linearisation program which enables you to eliminate by yourself a possible discrepancy between the captor temperature displayed by 1/10°C, and the temperature measured in the oven by an independent calibrated thermometer.

CROCO-CIL® all models below include electronic regulator

STANDARD CROCO-CIL® : Elevated temperature control

The opposite metal mesh beds guarantee uniform temperature spread as the metal acts as an ideal heat conductor while, at the same time, allowing air to circulate freely. (CIL patent)

AMBIENT TO 99°C



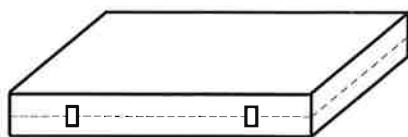
Short :
25 x 8 x 8 cm
100-025-220P
Internal dim: 24(L)x 4.5(l) cm

Analytical column from 3 cm to 10 cm length and guard column



Standard :
40 x 8 x 8 cm
100-040-220P
Internal dim: 38(L)x 4.5(l)

Any analytical column and microcolumn up to 30 cm length and guard column



Triple width :
40 x 24 x 8 cm
100-040-220TW
Internal dim: 38(L)x 20(l) cm

Up to 15 analytical columns
3 preparative columns of 20 mm I. D.

Specifications for all models :

Temperature range	: 30°C to 99°C
Stability	: +/- 0.2°C (recorded at 4 different spots in the oven)
Accuracy	: +/- 1°C
Temperature repeatability	: +/- 0.5°C
Temperature double security	: real time temperature checking every 2 seconds
Heat-up speed	: 5°C/min
Temperature on LCD	: 1-temperature set by increment of 1°C 2-temperature of the sensor by 0.1°C
Security	: - scrutinize on line the heaters and the sensor, - digital display of error message, cutoff, - automatic cutoff device at 115°C.
Communication	: Manual, RS232 and remote
Power	: 120VA
Line voltage	: 230V-50 Hz/115V-60Hz
Weight :	
Electronic control module	: 3.5 kg Oven : 1 to 5 kg

* the specifications are not guaranteed at the extremes of the range



99SOFT

OPTIONAL SOFTWARE OF TRACEABILITY OF THE TEMPERATURE

FOR COLUMN HEATERS
CIL Cluzeau Info Labo

Temperature recording : 40°C

Starting time : 11/12/2003 10:14:16

11/12/2003	10:14:46	; 40	; 40.0
11/12/2003	10:15:16	; 40	; 40.0
11/12/2003	10:15:46	; 40	; 40.0
11/12/2003	10:16:16	; 40	; 40.0
11/12/2003	10:16:46	; 40	; 40.0
11/12/2003	10:17:16	; 40	; 40.0

Ending time : 11/12/2003 10:17:25

TO ORDER : PN# 99SOFT

 **Scantec Nordic**
Analys & Mätteknik

Tel +46 31 336 90 00 • www.scantecnordic.se

HPLC - GC SUPPLIER SINCE 1981



fax : 33 5 57 46 53 96

email : cil@cluzeau.com

web : www.cluzeau.com

CLUZEAU INFO LABO

33-35 Rue Jean-Louis Faure, BP 88
33220 SAINTE-FOY-LA-GRANDE - FRANCE
☎ : 33 5 57 46 00 44 - Fax : 33 5 57 46 53 96