

InertSustainSwift™ C18

Physical Properties

● Silica	: Newly Developed ES Silica Gel	● Bonded Phase	: Octadecyl Groups
● Particle Size	: 1.9 μm, 3 μm, 5 μm	● End-capping	: Complete
● Surface Area	: 200 m ² /g	● Carbon Loading	: 9.0 %
● Pore Size	: 200 Å (20 nm)	● USP Code	: L1
● Pore Volume	: 1.00 mL/g	● pH Range	: 1.0~10.0



As shown in figure 1, InertSustainSwift C18 maintains the same extreme inertness, wide pH range and provide rapid separations with symmetric peaks. The optimization of surface area, pore size and chemical bonding delivers superior peak shapes (Figure 2). Figure 3 proves InertSustainSwift C18 is also ideal for LC/MS/MS applications which offer highly sensitive results and enables MS compatible buffers to be used due to the extremely inert silica gel.

Figure 1: Comparison of Retentivity

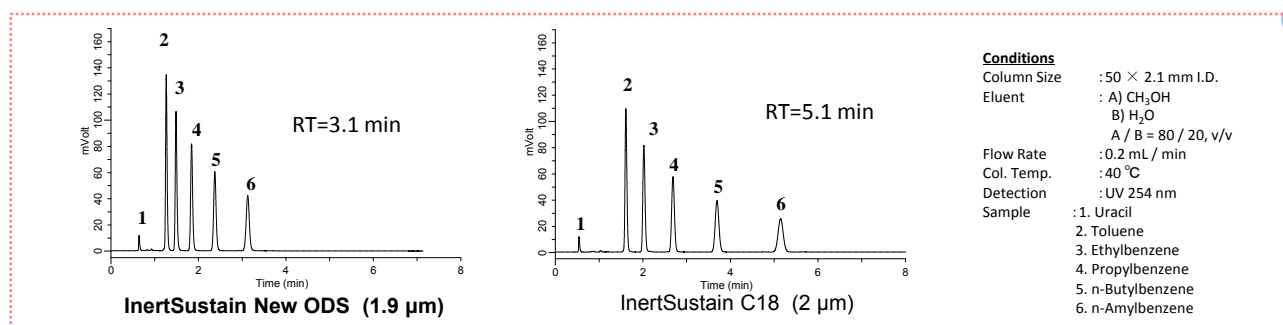


Figure 2: Comparison of Efficiency

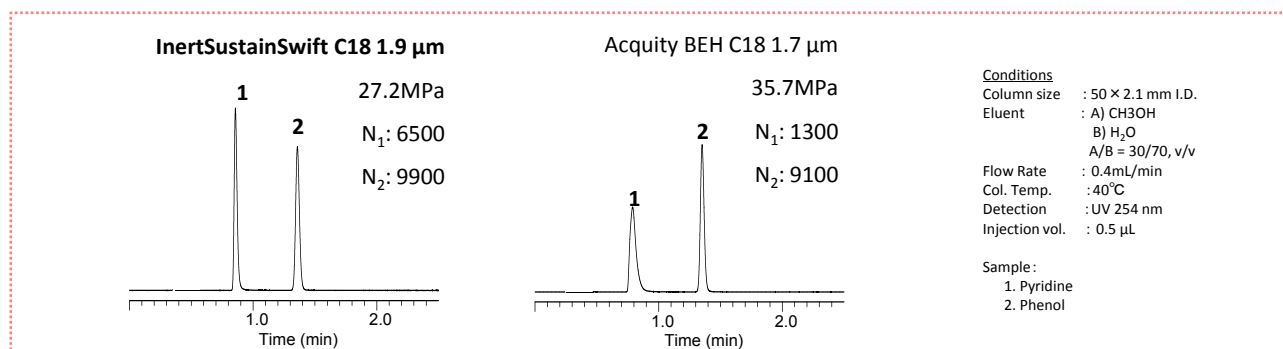
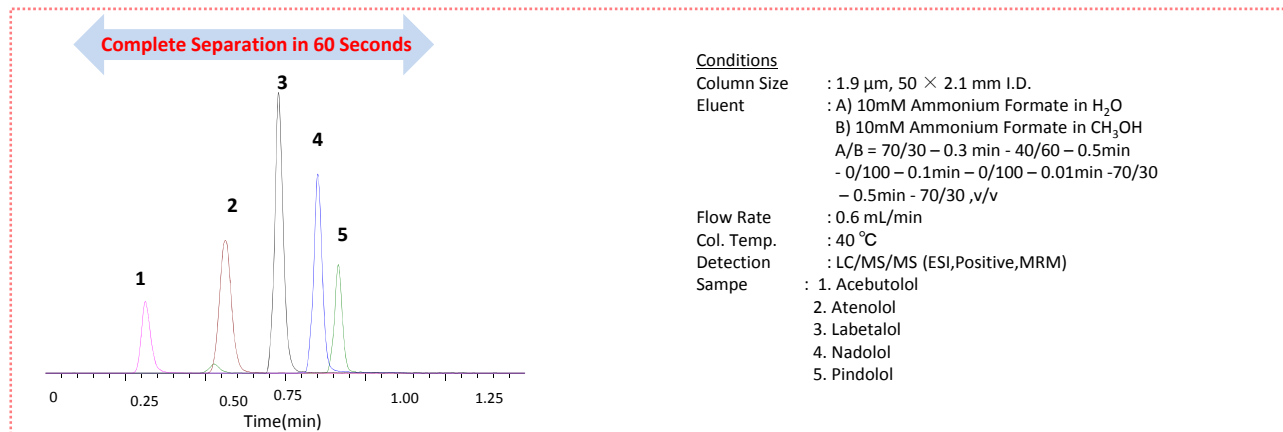


Figure 3: Rapid LC/MS/MS Analysis of Basic Drugs



Order Information

Particle size : 1.9 µm 80MPa (800Bar)	Length/I.D. (mm)	2.1	3
	50	5020-88228	5020-88233
	100	5020-88230	5020-88235
	150	5020-88231	5020-88236

HP Series Particle size : 3 µm 50MPa (500Bar)	Length/I.D. (mm)	2.1	3	4.6
	50	5020-88210	5020-88216	5020-88222
	100	5020-88212	5020-88218	5020-88224
	150	5020-88213	5020-88219	5020-88225
	250	5020-88214	5020-88220	5020-88226

Particle size : 3 µm	Length/I.D. (mm)	1	1.5
	30	5020-88160	5020-88166
	50	5020-88161	5020-88167
	75	5020-88162	5020-88168
	100	5020-88163	5020-88169
	150	5020-88164	5020-88170
	250	5020-88165	5020-88171

Particle size : 3 µm	Length/I.D. (mm)	2.1	3	4	4.6
	30	5020-88123	5020-88131	5020-88138	5020-88145
	50	5020-88124	5020-88132	5020-88139	5020-88146
	75	5020-88125	5020-88133	5020-88140	5020-88147
	100	5020-88126	5020-88134	5020-88141	5020-88148
	125	5020-88253	5020-88254	5020-88255	5020-88256
	150	5020-88128	5020-88135	5020-88142	5020-88149
	250	5020-88129	5020-88136	5020-88143	5020-88150

Particle size : 5 µm	Length/I.D. (mm)	1	1.5
	30	5020-88038	5020-88044
	50	5020-88039	5020-88045
	75	5020-88040	5020-88046
	100	5020-88041	5020-88047
	150	5020-88042	5020-88048
	250	5020-88043	5020-88049

Particle size : 5 µm	Length/I.D. (mm)	2.1	3	4	4.6
	30	5020-88001	5020-88008	5020-88015	5020-88022
	50	5020-88002	5020-88009	5020-88016	5020-88023
	75	5020-88003	5020-88010	5020-88017	5020-88024
	100	5020-88004	5020-88011	5020-88018	5020-88025
	125	5020-88249	5020-88250	5020-88251	5020-88252
	150	5020-88005	5020-88012	5020-88019	5020-88026
	250	5020-88006	5020-88013	5020-88020	5020-88027

* End-fittings are 1/16" Waters-compatible.

Worldwide Ordering Information

GL Sciences, Inc. Japan

22-1 Nishishinjuku 6-Chome
Shinjuku-ku, Tokyo, 163-1130, Japan
Phone: +81-3-5323-6620
FAX: +81-3-5323-6621
Web: www.glsclences.com
email: world@glsc.co.jp

GL Sciences, B. V.

DE SLEUTEL 9 5652 AS EINDHOVEN
THE NETHERLANDS
TEL : +31 (0)40 254 95 31
FAX :+31 (0)40 254 97 79
<http://www.glsclences.eu>
E-MAIL : info@glsciences.eu

GL Sciences, Inc. USA

4733 Torrance Blvd. Suite 255
Torrance, CA 90503
Phone: 310-265-4424
FAX: 310-265-4425
Web: www.glsclencesinc.com
email: info@glsciencesinc.com