

Forceps

Non-serrated flat tips for delicate membranes

Cat. No.225-8371

Serrated pointed tips

Cat. No.225-13-1

PTFE-coated pointed tips to avoid contaminants when sampling for hexavalent chromium

Cat. No.225-1344



Filter Handling Kit

Includes SureSeal Cassette Opener, filter lifter, and non-serrated flat-tip forceps, in a convenient carry case

Cat. No.225-8372



Sampling Labels

Identify samples with sample number, date, flow rate, pump number, time on, and time off, pk/500

Cat. No.225-1370

For filter support pads see page 87

For filter holders see page 87

Filter Sampling Accessories

SKC Filter Cassette Holder

The lightweight SKC Filter Cassette Holder attaches firmly to the collar for sampling in the breathing zone. Its special design securely holds a two or three-piece 37-mm cassette with or without cyclone, 25-mm cassette with cowl, or DPM Cassette with GS-1 Cyclone. The Filter Cassette Holder includes 0.9 meter (3 feet) of 1/4-inch ID Tygon tubing and a 25-mm adapter ring (*cassette in photo not included*).

Cat. No.225-1



Calibration Jars

Rugged polypropylene SKC Calibration Jars feature a quick-screw cap and barbed fitting for easy connection. Available in two sizes

Standard Size for GS Cyclones, PPI, and low-volume PUF tubes

Cat. No.225-111

Large Size fits 20.3-cm (8-in) L x 8.3-cm (3.25-in) diameter devices

Cat. No.225-112



Glass Jars

Sturdy 37-mm glass jars with PTFE-lined caps are ideal for transport and solvent extraction of filter samples in the field or the lab.

Cat. No. 225-8377.....pk/36

Cat. No. 225-8376.....pk/8



Helmet Adapter*

Ideal for welders or workers who wear a helmet with face shield. Holds a filter cassette or sample tube in the breathing zone regardless of visor position

Cat. No.225-600

* Developed in Canada by IRSST (Institut de recherche Robert-Sauvé en santé et en sécurité du travail du Québec)

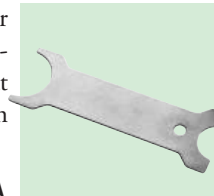


www.skcltd.com

SureSeal Cassette Opener

The SureSeal Cassette Opener is a sturdy stainless steel crowbar with extended handle that makes opening 25 or 37-mm cassettes easy.

Cat. No.225-13-5A



Stainless Steel Filter Lifter

Speeds removal of filters from cassettes without damage

Cat. No.225-13-7



Tubing, Collar Clip, and Cable Tie

For attachment of a sampling cassette to the collar; includes 0.9 meter (3 feet) of Tygon tubing (1/4-inch ID) and one alligator clip attached to a nylon cable tie

Cat. No.225-13-8

Collar Clip and Cable Ties Only

Cat. No. 225-13-6.....pk/10



Cassette Adapters

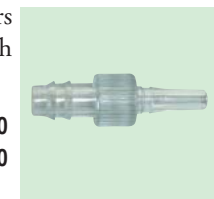
PVC Luer taper adapters connect a cassette to 1/4-inch ID tubing.

Cat. No. 225-13-2.....pk/10

Cat. No. 225-132A.....pk/250

Nickle-plated Brass

Cat. No. 225-13-3.....pk/10



Tripod Stand

Convenient for area sampling at breathing zone height, the SKC Tripod Stand telescopes to 1.5 meters (5 feet) and holds a 25 or 37-mm cassette or a BioStage Impactor. *Stand does not hold a pump.*

Cat. No.228-506

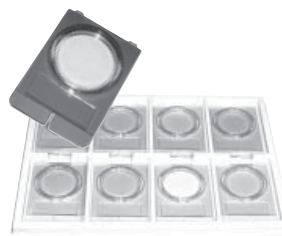


SKC Ltd. Phone: +44 (0)1258 480188

Filter Sampling Accessories

Filter-Keeper Filter Transport and Storage

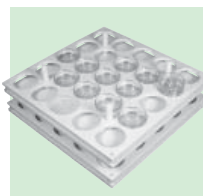
Minimize sample loss with static-dissipative plastic Filter-Keepers. The clamshell design locks the periphery of filters into place away from any surface. Eight Filter-Keepers can be kept in a numbered Filter-Keeper Archiving Tray that contains an area for labeling.



Description	Cat. No.	Qty.
25-mm Filter-Keepers include labels	225-8301	100
25-mm Filter-Keepers with 6 Archiving Trays include labels	225-8302	48
37-mm Filter-Keepers include labels	225-8303	100
	225-8303A	10
37-mm Filter-Keepers with 6 Archiving Trays include labels	225-8304	48
Archiving Trays Only	225-8305	6

Kasset-Kaddy

Each Kasset-Kaddy tray securely holds twenty-five 37-mm cassettes for convenient transport or storage. The polypropylene trays measure 10 x 10 inches to fit commercially available desiccators and ovens, pk/2



Cat. No. 225-8321

Filter Transport Case

Conductive plastic case securely holds 25-mm filters for transport.

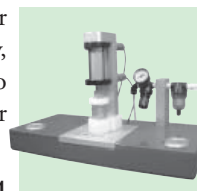
Cat. No. 225-67



Accu-Press Cassette Closer

Accu-Press Cassette Closer closes cassettes consistently, easily, and without damage to prevent air bypass and filter leakage.

Cat. No. 225-8361



Aero-Chek Cassette Leak Tester

Quickly and safely check cassettes for plastic-to-plastic leakage in the lab or in the field.

Cat. No. 225-8531



Petri Dish Slides

Easily transport filters up to 47 mm in diameter with Petri Dish Slides. The rectangular base fits most microscope stages, pk/100

Cat. No. 225-2-01



Face Level Sampling Headset For Convenient Personal Sampling

- Secures sampling media in the breathing zone
- Wear inside personal protective equipment with:
 - 6 x 70-mm sorbent tubes
 - 3.5-inch thermal desorption tubes
 - 13 and 25-mm cassettes
 - Passive samplers
 - Mini welding aerosol sampler

Provides the comfort of a traditional headset with the benefit of holding media at the heart of the breathing zone for accurate measurements

The Face Level Sampling Headset was developed in a research project partly funded by the Swedish Work Environment Authority and carried out at Stockholm University, Sweden.

Includes headset with 2 flexible sampling arms, 4 hose connectors, 2 Luer plugs, and 2 Luer connectors
Cat. No. 225-6200

Mini Sampler for Welding Aerosol
Cat. No. 225-6201

Calibration Adapter for Mini Sampler
Cat. No. 225-6202

Tube Holder and Cover
Cat. No. 225-6220

MCE Filters, 13 mm, 5.0 µm, pk/100
Cat. No. 225-8050

Tubing for Sampling Particulates in Air

Description/Applications	ID mm (in)	OD mm (in)	Cat. No.	Meters (feet)
Tygon, sampling trains	4.76 (3/16)	7.94 (5/16)	225-1346	3 (10)
Tygon, sampling trains; fits over impinger sidearm and inlet, filter cassette outlet, or Luer adapter	6.35 (1/4)	9.53 (3/8)	225-13-4A 225-13-4 225-1345	1 (3.3) 3 (10) 15 (50)
Tygon, for calibrating DCS/DPS	7.94 (5/16)	14.29 (9/16)	225-1349	3 (10)
Tygon, for calibrating QuickTake Pump	9.53 (3/8)	12.7 (1/2)	225-1351 225-1352	3 (10) 15 (50)
Latex Rubber, black, sampling trains	4.76 (3/16)	7.94 (5/16)	226-03-003	3.7 (12)
Latex Rubber, black, sampling trains; fits over impinger sidearm and inlet, filter cassette outlet, or Luer adapter	6.35 (1/4)	9.53 (3/8)	226-03-004	3.7 (12)
Latex Rubber, amber, sampling trains; fits over impinger sidearm and inlet, filter cassette outlet, or Luer adapter	6.35 (1/4)	9.53 (3/8)	225-1347	3 (10)
Polyurethane, reinforced, sampling trains; fits over impinger sidearm and inlet, filter cassette outlet, or Luer adapter	6.35 (1/4)	11.9 (15/32)	225-1350	3 (10)
Spring Tubing Supports, use with 5/16-inch OD tubing to prevent kinking, pk/5			225-1348	5 supports