



# HICHROM

Chromatography Columns and Supplies

## LC COLUMNS Hichrom Chiral Columns

Catalogue 9



Scantec Nordic

Analys & Mätteknik

031 336 90 00 • [www.scantecnordic.se](http://www.scantecnordic.se)

## Hichrom Limited

1 The Markham Centre, Station Road  
Theale, Reading, Berks, RG7 4PE, UK

Tel: +44 (0)118 930 3660 Fax: +44 (0)118 932 3484

Email: [sales@hichrom.co.uk](mailto:sales@hichrom.co.uk) [www.hichrom.co.uk](http://www.hichrom.co.uk)

## HICHROM CHIRAL COLUMNS

- Chiral 'Pirkle-type'
- Unique covalent bonding
- Enantiomer elution order inversion
- Competitively priced
- Hichrom high efficiency

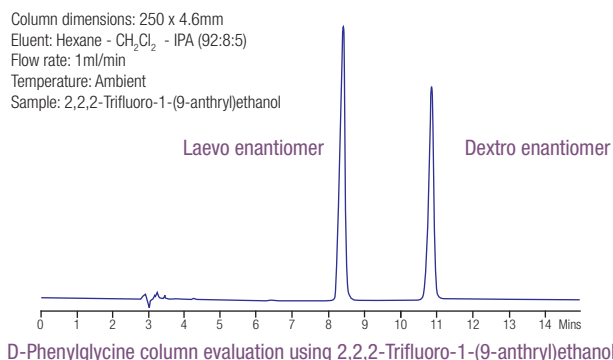
Hichrom manufactures two ranges of 'Pirkle-type' columns for the analysis of a wide range of enantiomers of pharmaceutical or agrochemical origin. CHIRA-chrom 1 type columns contain a stationary phase in which the hydroxyl groups on the silica surface have been modified by a nitrobenzoyl derivative of an optically active amino acid. In the CHIRA-chrom 2 type columns a chiral dinitrophenyltartramide moiety is bonded to the silica surface through a propyl spacer group.

### Pirkle Chiral Phases

Phase	Type	Endcapped	Particle Size (µm)
D-Phenylglycine	CHIRA-chrom-1	No	5
L-Phenylglycine	CHIRA-chrom-1	No	5
DL-Phenylglycine	CHIRA-chrom-1	No	5
L-Leucine	CHIRA-chrom-1	No	5
Dinitrophenyltartramide	CHIRA-chrom-2	No	5

### Inversion of enantiomer elution order

By substituting L-phenylglycine for D-phenylglycine, the order of elution of the chiral peaks can be reversed. Such a procedure can be useful in assigning peak identity or ensuring prior elution of the minor enantiomer, thus allowing its more accurate determination. The availability of the DL-phenylglycine further aids peak assignment by removing chiral separations whilst maintaining background peak retention profile.



### Ordering Information

Please contact Hichrom for details of additional column dimensions not listed.

Chiral Phase	Column Dimensions (mm)			Guard Cartridge <sup>1</sup> (For 3.2-4.6mm i.d. Columns)	Guard Cartridge <sup>3</sup> (For 7.75mm i.d. Columns)
	250 x 3.2	250 x 4.6	250 x 7.75		
D-Phenylglycine	CHI-D-PGC-250AS	CHI-D-PGC-250A	CHI-D-PGC-250SP	CHI-D-PGC-10C5 (5/pk) <sup>2</sup>	CHI-D-PGC-10CP3 (3/pk)
L-Phenylglycine	CHI-L-PGC-250AS	CHI-L-PGC-250A	CHI-L-PGC-250SP	CHI-L-PGC-10C5 (5/pk) <sup>2</sup>	CHI-L-PGC-10CP3 (3/pk)
DL-Phenylglycine	CHI-DL-PGC-250AS	CHI-DL-PGC-250A	CHI-DL-PGC-250SP	CHI-DL-PGC-10C5 (5/pk) <sup>2</sup>	CHI-DL-PGC-10CP3 (3/pk)
L-Leucine	CHI-L-LEUC-250AS	CHI-L-LEUC-250A	CHI-L-LEUC-250SP	CHI-L-LEU-10C5 (5/pk) <sup>2</sup>	CHI-L-LEU-10CP3 (3/pk)
Phenyltartramide	CHI-TA-250AS	CHI-TA-250A	CHI-TA-250SP	CHI-TA-10C5 (5/pk) <sup>2</sup>	CHI-TA-10CP3 (3/pk)

<sup>1</sup> Use with free-standing holder HI-161 and column coupler HI-081 – see p. 24

<sup>2</sup> Starter kits also available – see p. 25

<sup>3</sup> Use with free-standing holder HI-150 and column coupler HI-081