

# AZURA Detector MWD 2.1L

## Article No.: ADB01

### Multiwavelength detector

The AZURA MWD 2.1L is an 8 channel, sensitive multiwavelength detector combining high performance with easy handling at an affordable price. A wide range of easily exchangeable cartridge flow cells make this device the right choice for fast, standard analytical, semi-preparative and preparative separations with bio-inert or stainless steel wetted parts. State-of-the-art total reflection flow cells (LightGuide technology) are available for this device providing maximum light throughput (due to total internal reflection) with minimal peak dispersion (due to the small cell volume) to guarantee an optimized S/N ratio. An optional fiber optics adapter offers the possibility to separate the flow cell spatially from the device and thus provides enhanced security for hazardous, explosive or toxic work processes, as well as protecting the device from leakages at high flow rates. The newly developed optical unit and intelligent temperature management ensure for maximum sensitivity combined with minimal baseline drift. Furthermore, easy frontal access and improved safety features enable effortless lamp replacement. This eases maintenance and guarantees short downtimes. This device is also easily upgradable to a diode array detector. The MWD 2.1L comes installed with a deuterium lamp which covers a wavelength range from 190 to 700 nm. This detector can be controlled with OpenLab® EZChrom, ClarityChrom®, Chromeleon® and PurityChrom® software, as well as from the Mobile Control software (stand-alone operation), via LAN or through analog input/output, allowing it to be integrated into almost any LC system.

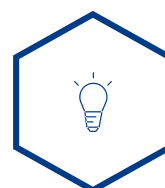


AZURA Detector MWD 2.1L

## KEY FEATURES



wide application range



fiber optics adapter available



large choice of flow cells



DAD upgrade possible



attractively priced

## TECHNICAL DATA

### Detection

Detector type	Variable multiwavelength detector
Detection channels	8 (Digital)/4 (Analog)
Light source	Deuterium (D <sup>2</sup> ) lamp with integrated GLP chip
Wavelength range	190 - 700 nm
Spectral bandwidth	< 10 nm at H <sub>α</sub> line (FWHM) /Note: digital bandwidth 1 - 32 nm
Wavelength accuracy	± 1 nm
Noise	± 5 μAU at 254 nm
Drift	400 μAU/h at 254 nm
Linearity	> 2.0 AU at 274 nm
Maximum data rate	100 Hz (LAN)/12.5 Hz (analog)
Flow cell	Not included (see Accessories / Spare parts)
Time constants	0.00 / 0.01 / 0.02 / 0.05 / 0.1 / 0.2 / 0.5 / 1.0 / 2.0 / 5.0 / 10.0 s

Integration time	Automatic
Wavelength verification	Internal holmium filter and deuterium lines
Leak sensor	Yes

## Communication

Inputs	Error (IN), Start (IN), Autozero
Outputs	Events 1 - 2 (Relay and TTL compatible, respectively), Error (OUT), + 5 V, Valve + 24 V, Valve (OUT)
Analog outputs	4 x 0 - 5 V, 16 bit, offset adjustable
Control	Mobile Control, software, event control, analog, terminal protocol
Interfaces	LAN (RJ-45), USB (service only), multi-pin connector, analog (RCA cinch connector)

## Technical parameters

GLP	Detailed report including lamp recognition, operating hours, /lamp operating hours, number of lamp ignitions
Display	Optional Mobile Control
Ambient conditions	Temperature range: 4 - 40 °C, 39.2 - 104 °F, Humidity: below 90 % noncondensing

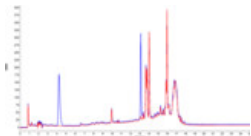
## General

Power supply	100 – 240 V, 50 – 60 Hz, 75 W
Dimensions	361 x 158 x 523 mm (W x H x D)
Weight	12.2 kg

## Other

Note	Flow cells are not included and must be ordered separately (see Accessories / Spare parts)
------	--

## APPLICATIONS FOR THIS PRODUCT



Quantitative determination of primary aromatic amines in recycled cold-cure and flexible foams

Automated two-step purification of 6xHis-tagged GFP with AZURA Bio LC

Fast and robust purification of antibodies from human serum with a new monolithic protein A column

[> Show application](#)

[> Show application](#)

[> Show application](#)

## RELATED PRODUCTS



**AZURA Detector DAD 6.1L**

Article No.: ADC11

[Show product](#)



**AZURA Detector DAD 2.1L**

Article No.: ADC01

[Show product](#)

## DOWNLOADS AND MORE INFORMATION

[Manuals](#)

[Information](#)

## AZURA Detektor DAD 6.1L, DAD 2.1L, MWD 2.1L Benutzerhandbuch

AZURA Detektor DAD 6.1L, DAD 2.1L, MWD 2.1L Benutzerhandbuch, V6700

Manual English PDF 2.6 MB

## AZURA Detector DAD 6.1L, DAD 2.1L, MWD 2.1L user manual

AZURA Detector DAD 6.1L, DAD 2.1L, MWD 2.1L user manual, V6700

Manual English PDF 2.6 MB

# ACCESSORIES & SPARE PARTS



### Deuterium Lamp

Article No.: A5193

Show product



### Tool kit AZURA

Article No.: A1033

Show product



### Accessory kit AZURA DAD 6.1L, DAD 2.1L, MWD 2.1L

Article No.: FDC

Show product



### Accessory kit AZURA large devices

Article No.: FZA02

Show product



### Standard KNAUER LightGuide UV Flow Cell Cartridge

Article No.: AMC19XA

Show product



### High Sensitivity KNAUER LightGuide UV Flow Cell Cartridge

Article No.: AMD59XA

Show product



**Analytical KNAUER PressureProof UV Flow Cell Cartridge**

Article No.: AMC38

[Show product](#)



**Semi-preparative KNAUER PressureProof UV Flow Cell Cartridge**

Article No.: AMB18

[Show product](#)



**Fiber Optics Adapter Kit**

Article No.: AMKX8KIT

[Show product](#)



**Analytical UV Flow Cell**

Article No.: A4074

[Show product](#)



**Semi-preparative UV Flow Cell**

Article No.: A4044

[Show product](#)



**Semi-preparative UV Flow Cell**

Article No.: A4047

[Show product](#)



**Preparative UV Flow Cell**

Article No.: A4089

[Show product](#)



**Preparative UV Flow Cell**

Article No.: A4096

[Show product](#)



**Preparative UV Flow Cell**

Article No.: A4078

Show product



**Preparative UV Flow Cell**

Article No.: A4079

Show product



**Preparative UV Flow Cell**

Article No.: A4081

Show product



**Preparative UV Flow Cell**

Article No.: A4081V2

Show product



**Cartridge Test Cell**

Article No.: AMLX8

Show product

Show less



**Do you need more details or a quote?**

We are happy to help you