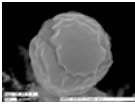


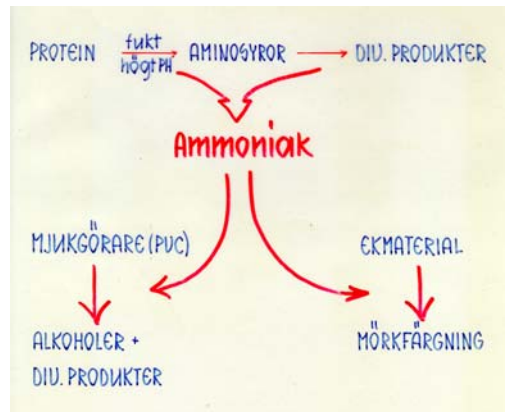
# Damm, kemi och ohälsa



Kjell Andersson  
Yrkes- och miljömedicinska kliniken  
Universitetssjukhuset Örebro

K Andersson

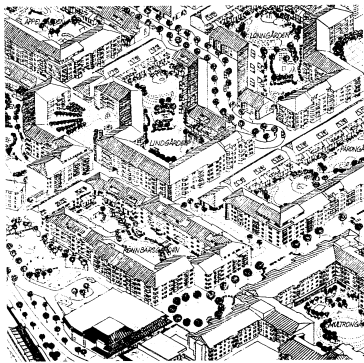
1



1

## DALEN

1978-1982  
14 gårdar  
4-våningar  
2½-våningar



K Andersson

Universitetssjukhuset Örebro



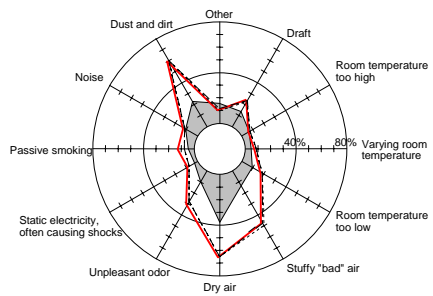
K Andersson

5

## HOME ENVIRONMENT

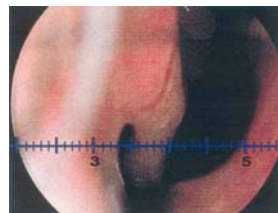
(often bothered) %

Dalen 1989

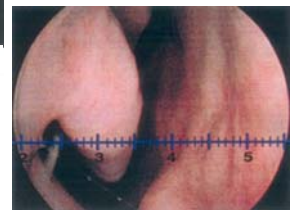


K Andersson

Direct answer ———  
First reminder - - - - -  
Second reminder ······ 3



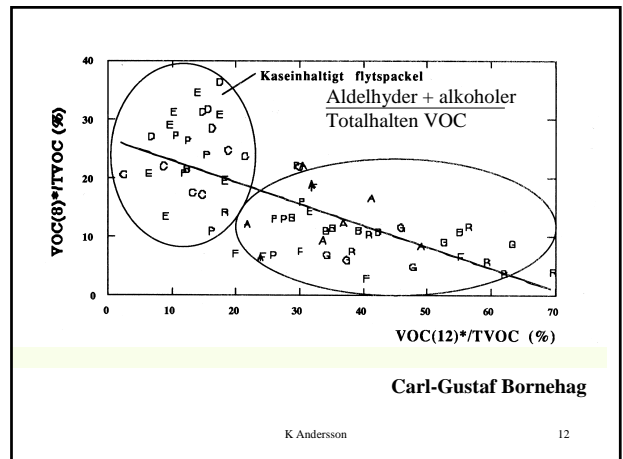
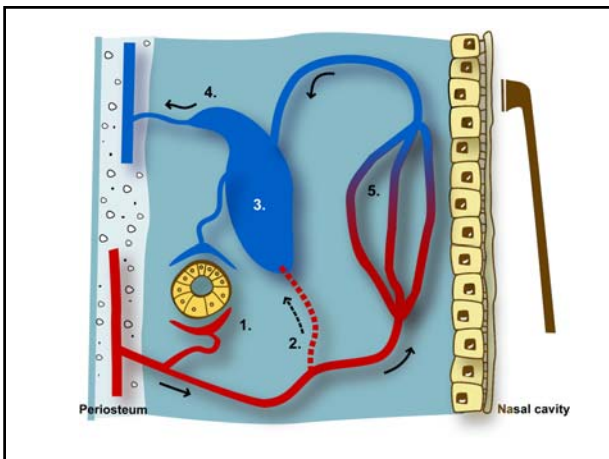
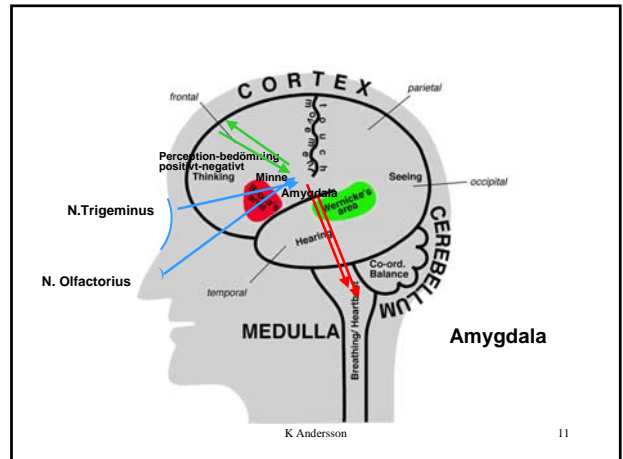
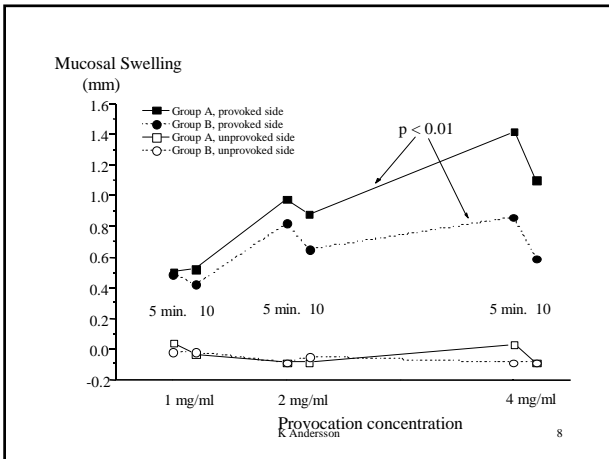
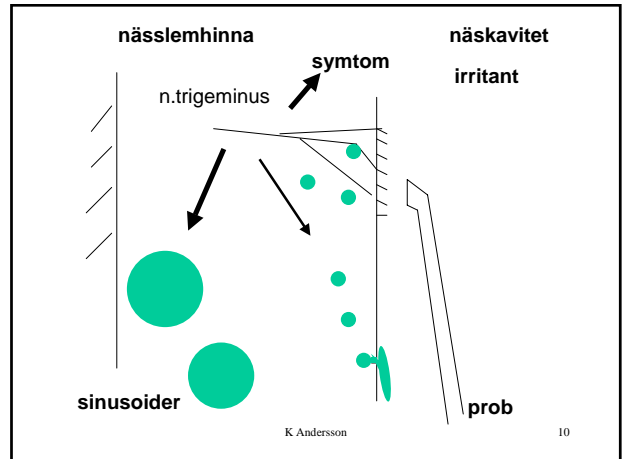
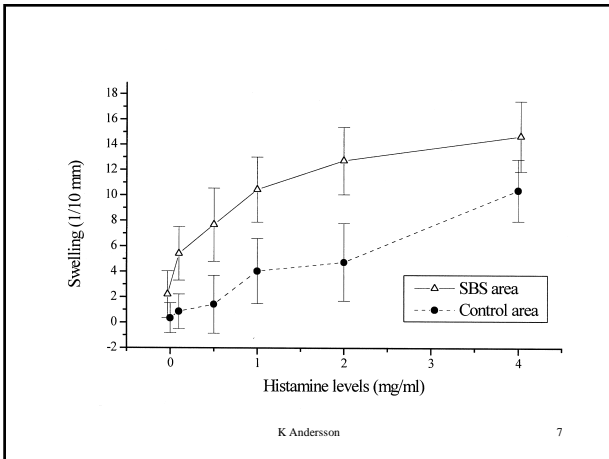
Oprovocerad slemhinna



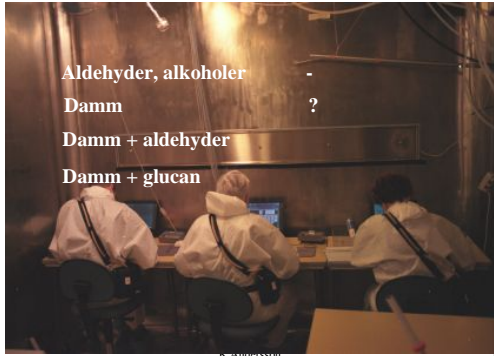
Provocerad slemhinna

K Andersson

5



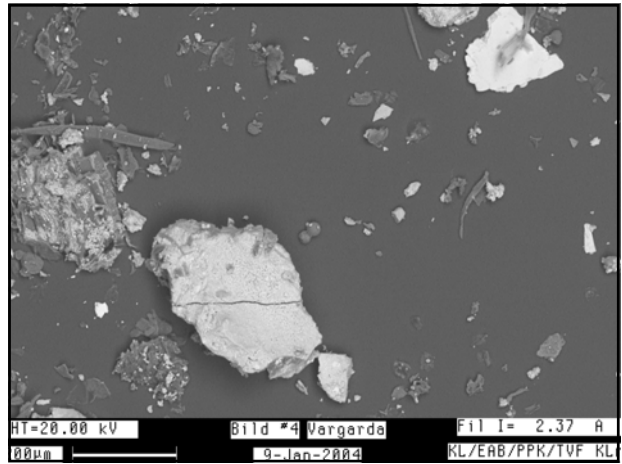
# Klimatkammare



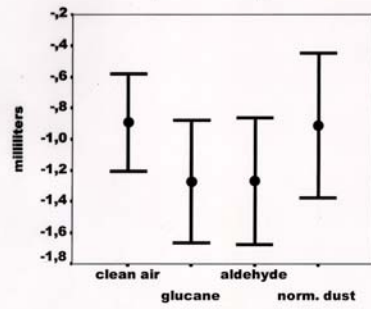
Aldehyder, alkoholer  
 Damm  
 Damm + aldehyder  
 Damm + glucan

K. Andersson

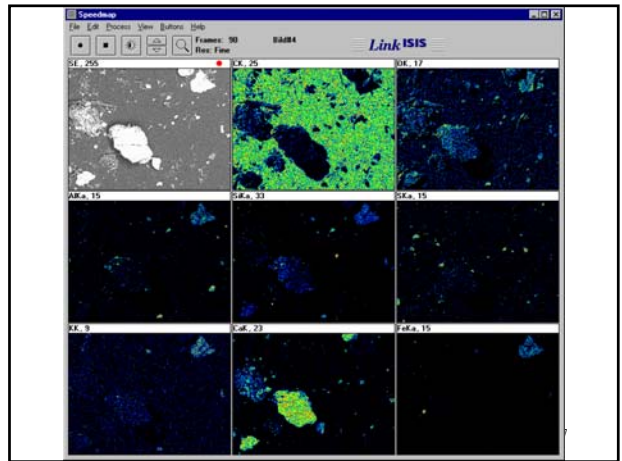
3



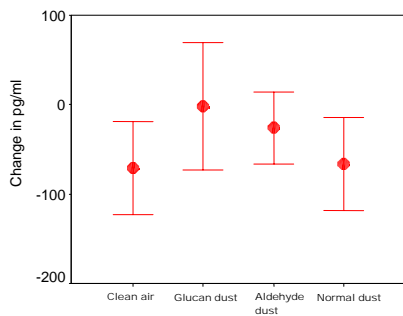
## Ændring i nasalt volumen (2-5 cm)



14



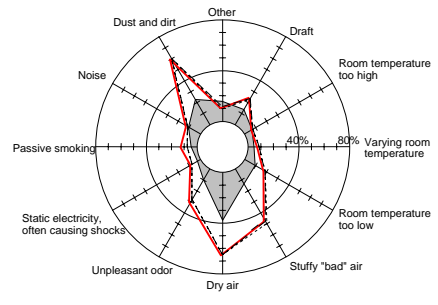
## Change in IL-8 after exposure



15

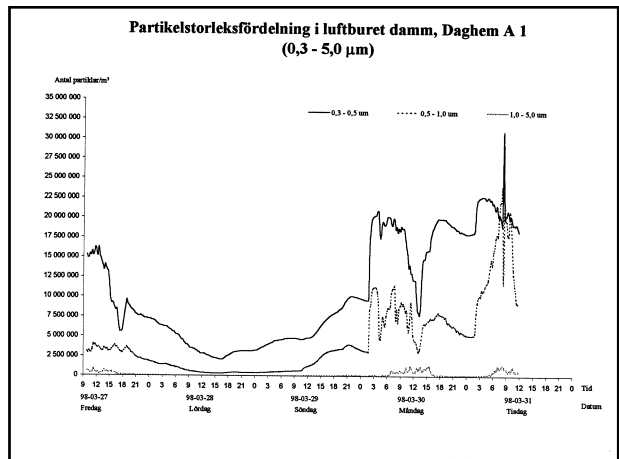
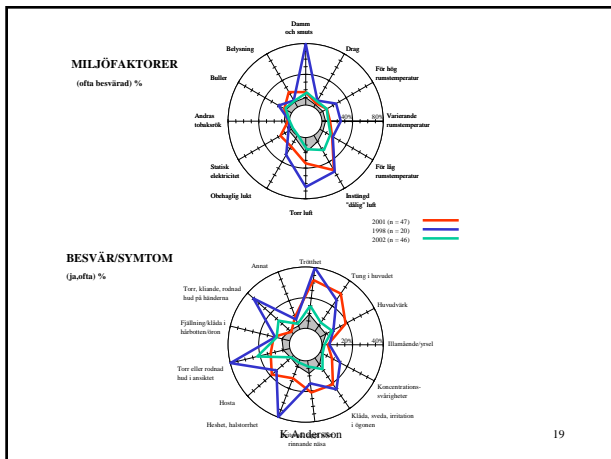
## HOME ENVIRONMENT (often bothered) %

Dalen 1989



K Andersson

Direct answer  
 First reminder  
 Second reminder 18

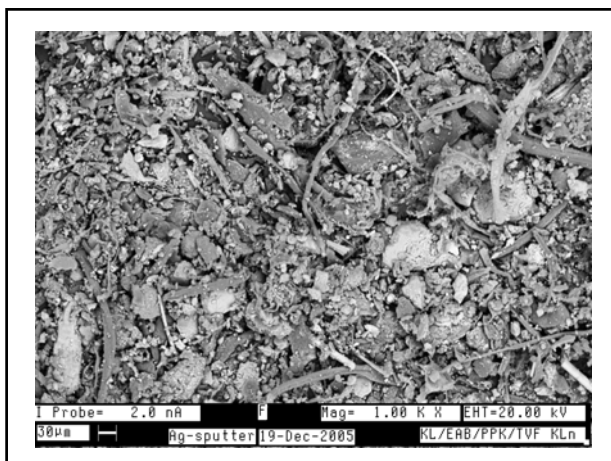


**Bornehag m.fl. Astma/allergiska symtom - phtalater**

**Nilsson A m.fl. Astma/allergiska symtom - nikotin**

damn från samma hus

K Andersson 20



**Sammanfattning**

**Objektivt mätbara effekter efter exponering för ”dåliga” miljöer (med damn och kemi)**

**Damn och kemi/biologi tycks potentiella effekter**

**Viktigt reducera partikelhalten- jämför städningen !**

[www.orebroll.se/ymk](http://www.orebroll.se/ymk)

K Andersson 24