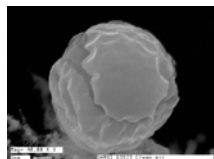


# Damm, kemi och ohälsa



**Kjell Andersson**  
Yrkes- och miljömedicinska kliniken  
Universitetssjukhuset Örebro

K Andersson

1

## DALEN

1978-1982

14 gårdar

4-våningar

2½-våningar

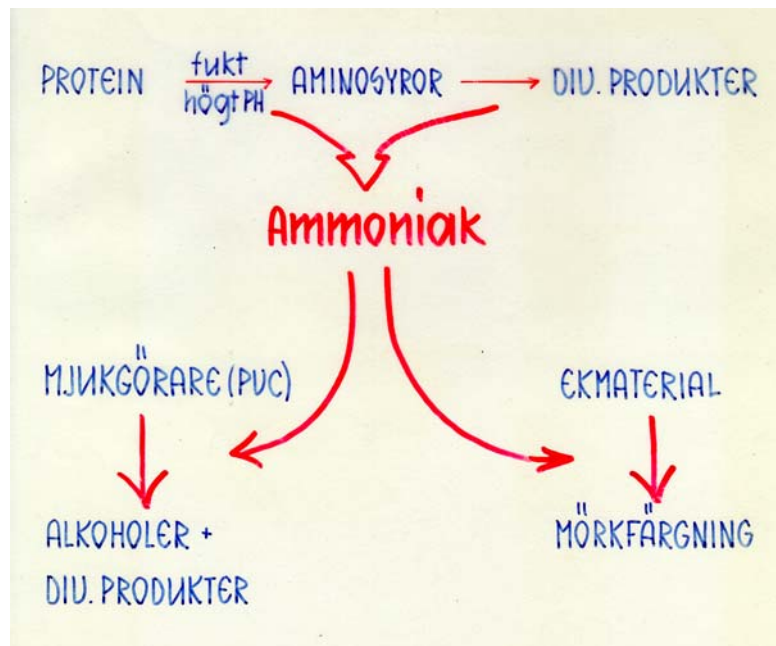
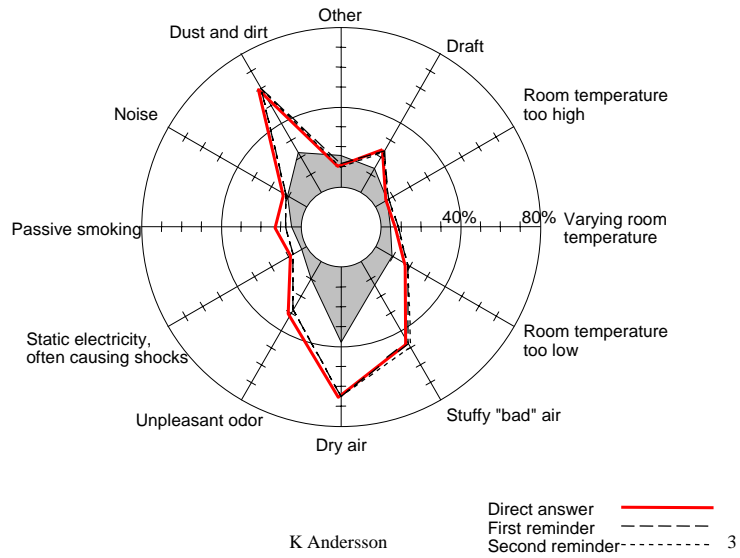


K Andersson

Universitetssjukhuset Örebro  
Yrkes- och miljömedicinska kliniken

**HOME ENVIRONMENT**  
(often bothered) %

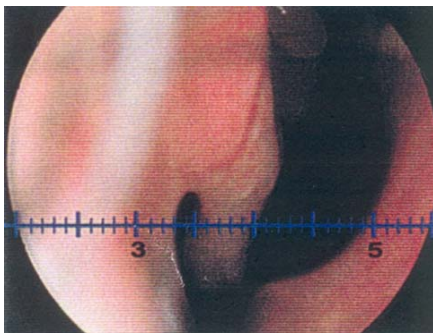
**Dalen 1989**



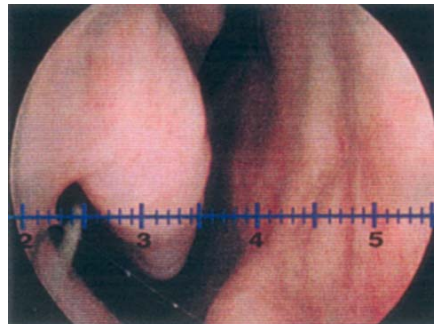


K Andersson

5



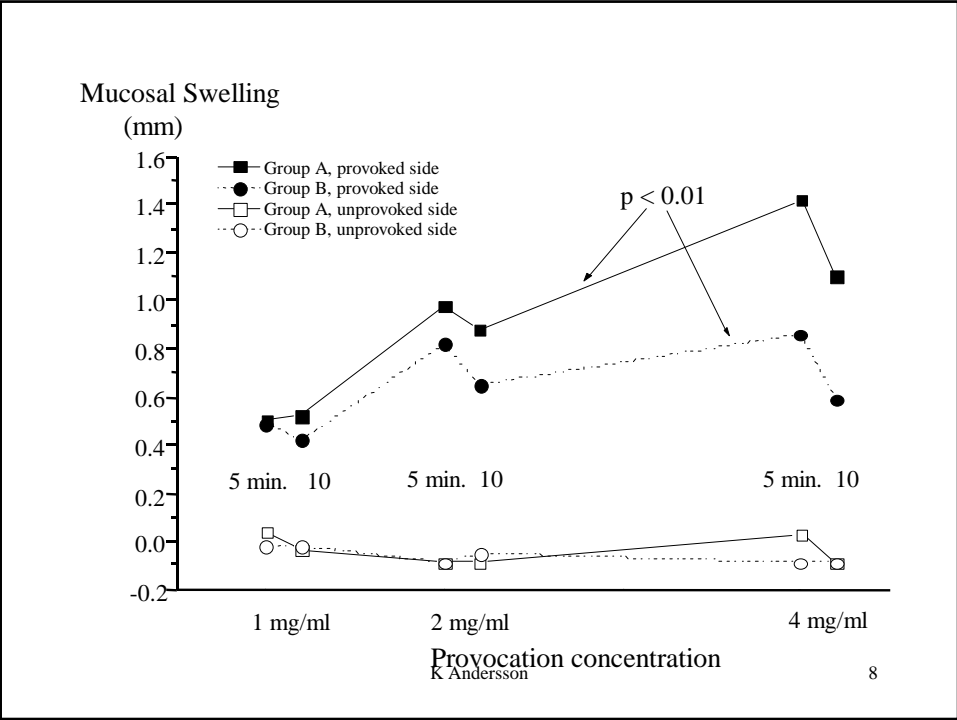
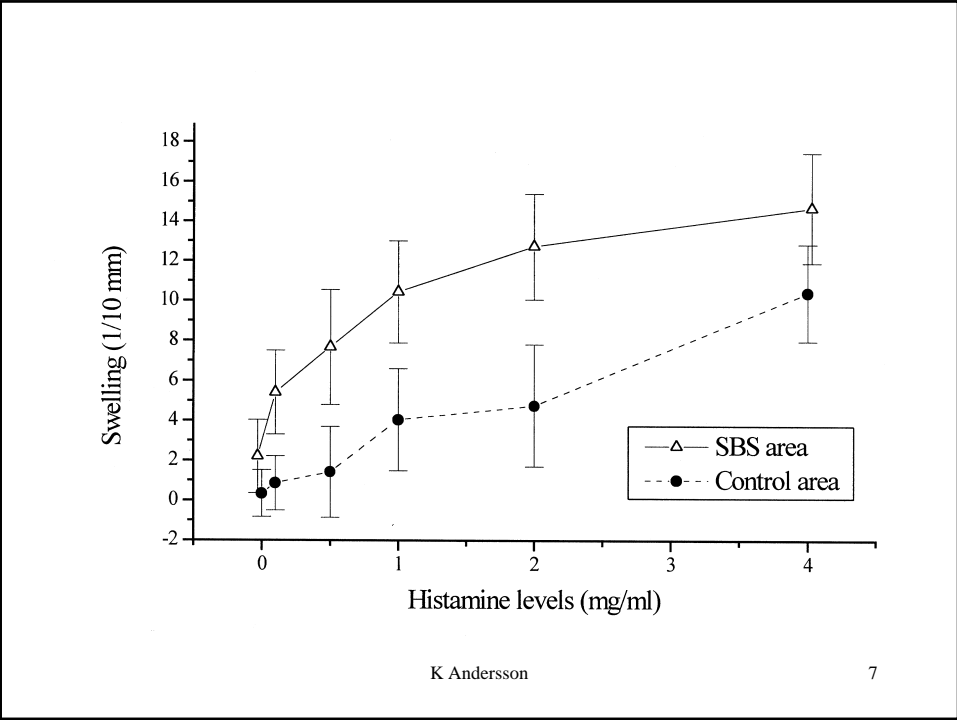
**Oprovocerad slemhinna**

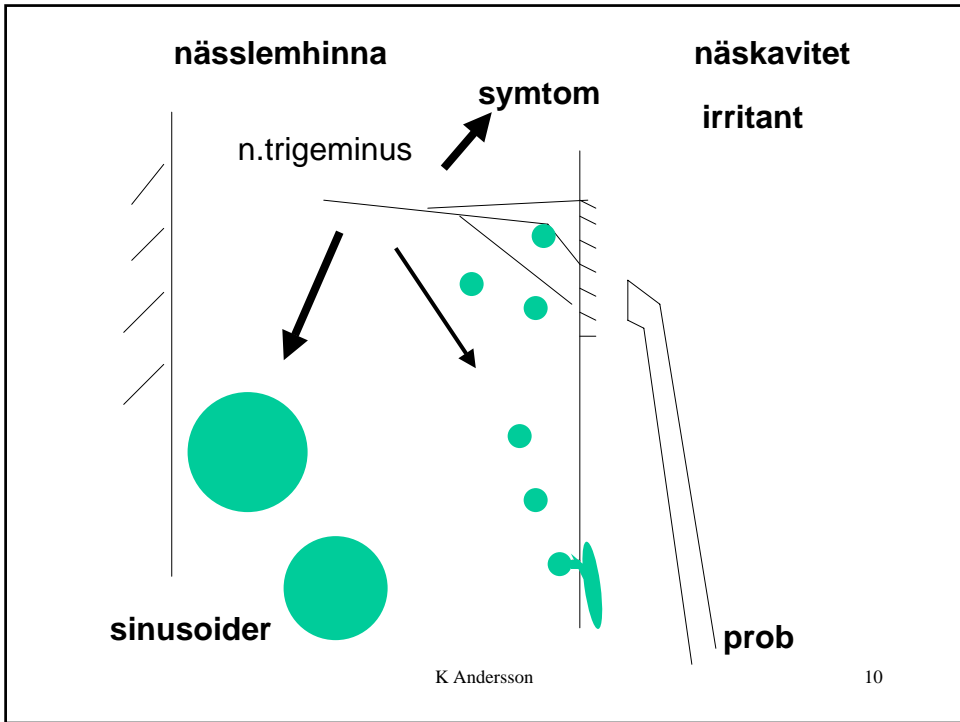
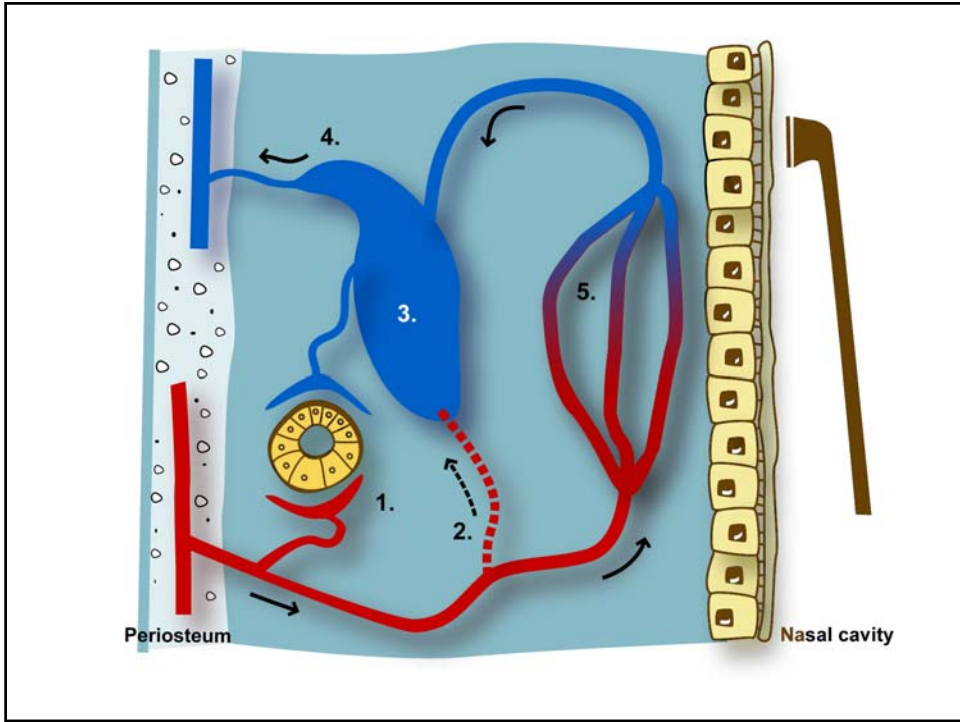


**Provocerad slemhinna**

K Andersson

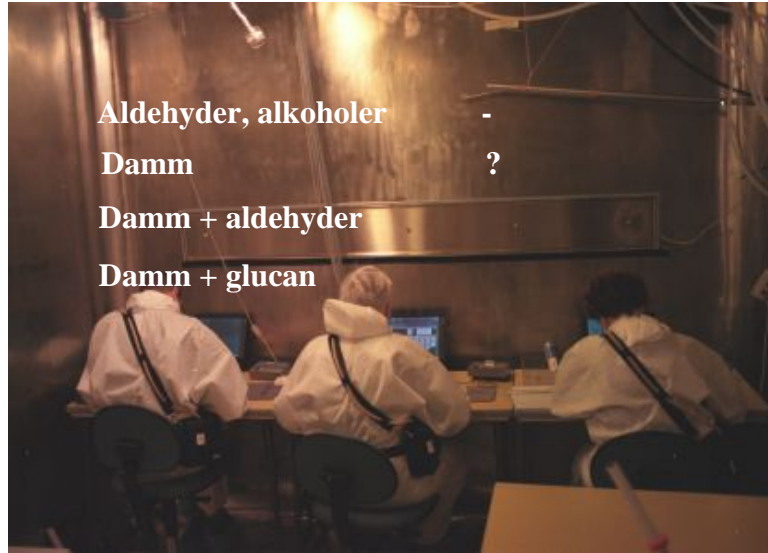
6



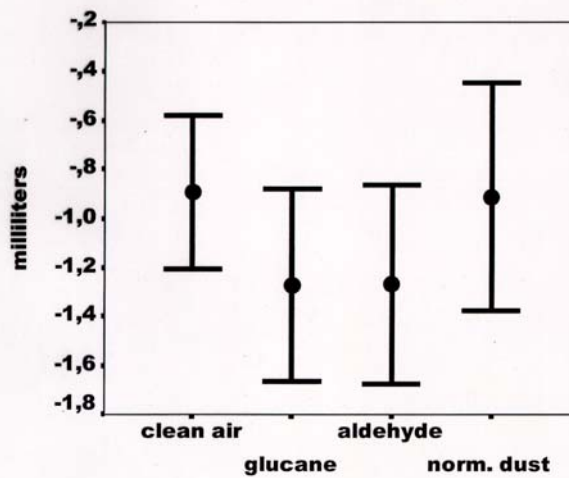




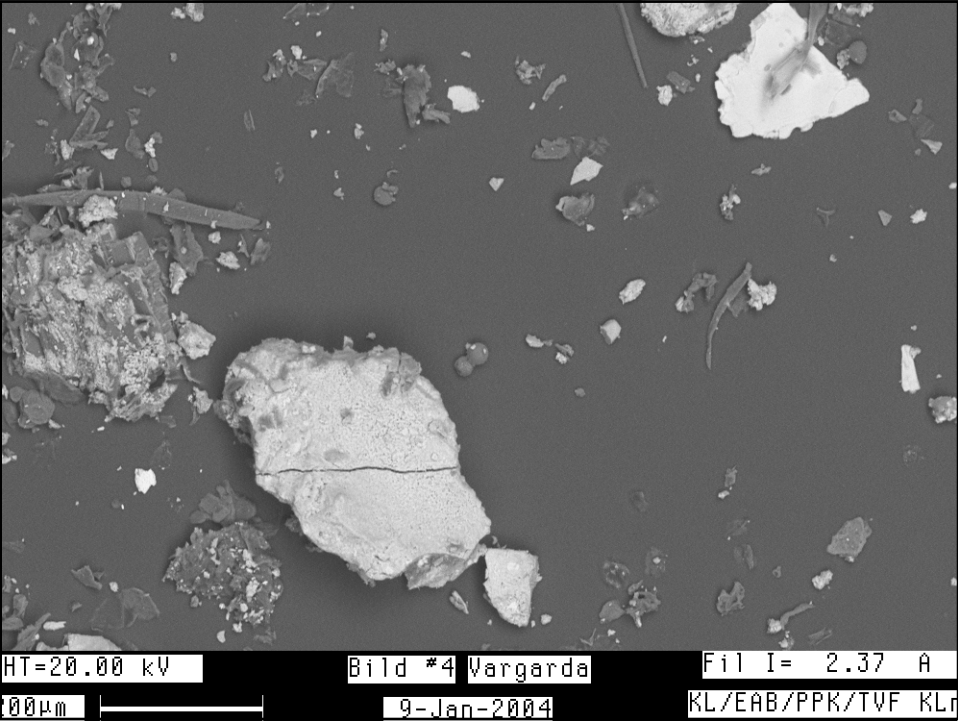
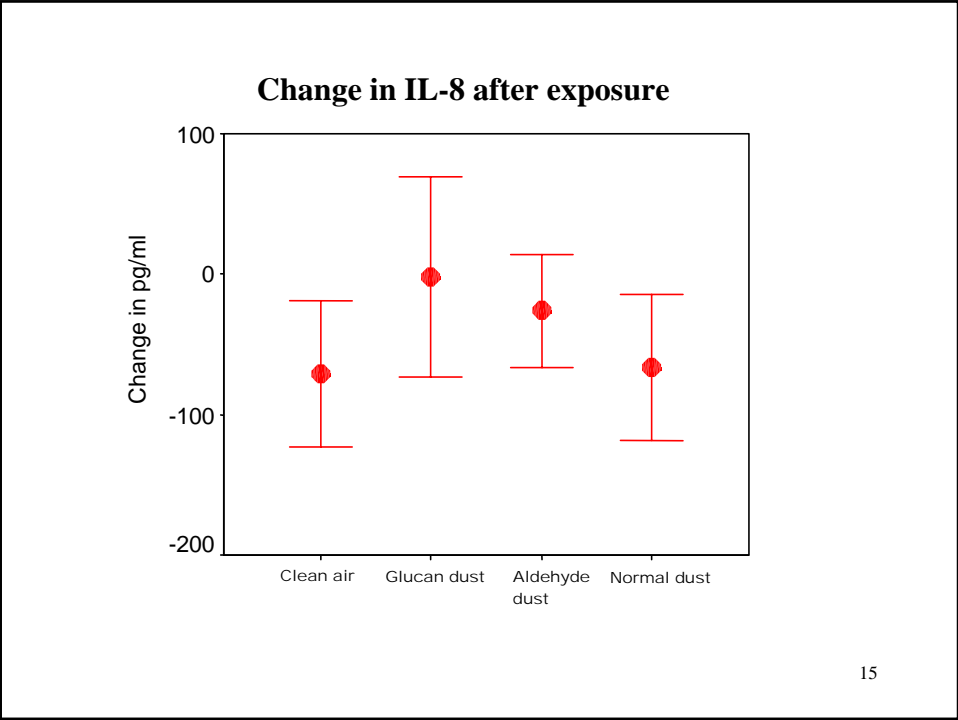
# Klimatkammare

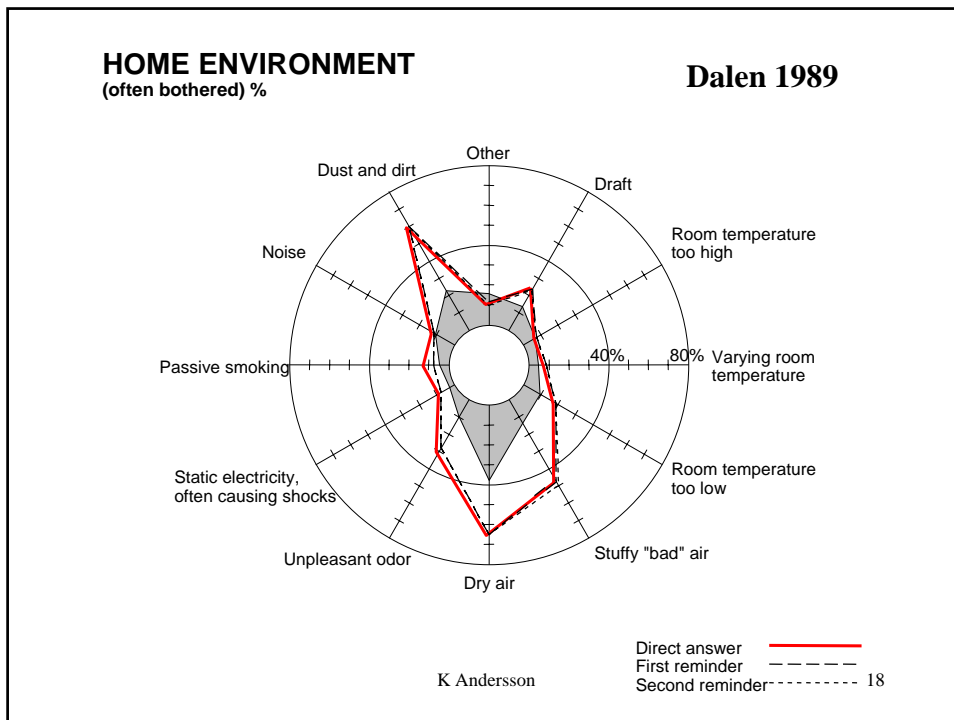
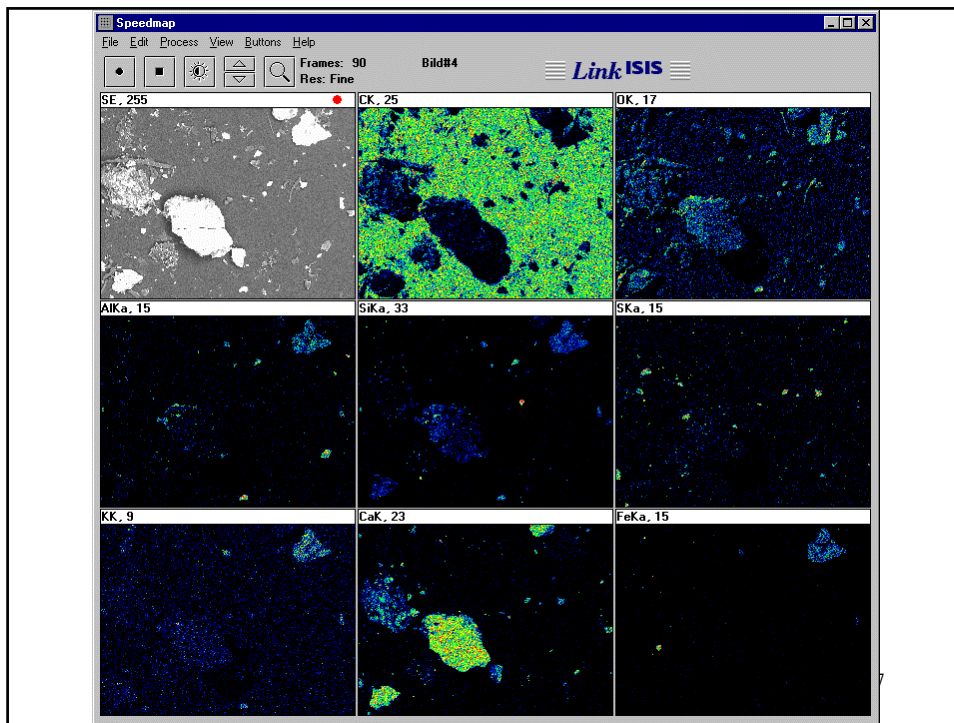


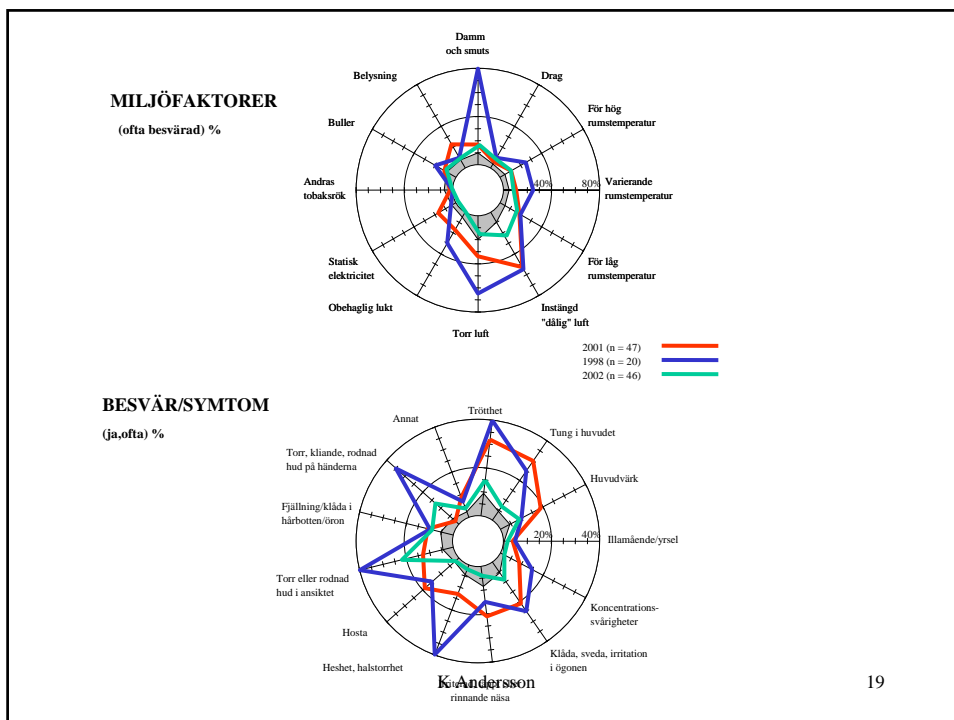
## Ændring i nasalt volumen (2-5 cm)



14







19

**Bornehag m.fl. Astma/allergiska symtom - phtalater**

**Nilsson A m.fl. Astma/allergiska symtom - nikotin**

damm från samma hus

K Andersson

20



## **”skorstenseffekten”**



**”> 50 % av luften vi andas hade senast kontakt med golvytor” (Murakami 2001)**

K Andersson

23

## **Sammanfattning**

**Objektivt mätbara effekter efter exponering  
för ”dåliga” miljöer (med damm och kemi)**

**Damm och kemi/biologi tycks potentiera  
effekten**

**Viktigt reducera partikelhalten- jämför städningen !**

**[www.orebroll.se/ymk](http://www.orebroll.se/ymk)**

K Andersson

24