



General Description:

FHO3502 is a portable OTDR with stable and durable, which aims at broadcast and telecommunication network measurement. It is also the first OTDR to achieve data share of point-to-point and point-to-multi-point via internet. Users can remotely control this instrument via PC when conducting fiber maintenance and testing.

Key Features :

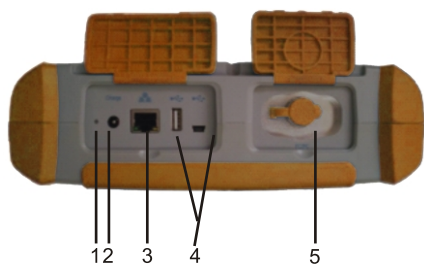
- Remotely control the instrument via Internet
- 6.4" color TFT LCD
- Convenient one-button testing
- High-speed signal processing, less measurement time, and faster result analysis.
- USB port, SD card slot, and Ethernet Port
- Compact and lightweight
- Shock and water proof, Lithium battery to provide more than 10 hours working time
- Linux operating system for easy upgrade
- Input Optical auto-detection and Self-protection function
- Optical Connector Connection Alarming function
- Self-calibrations Function



Front Panel:



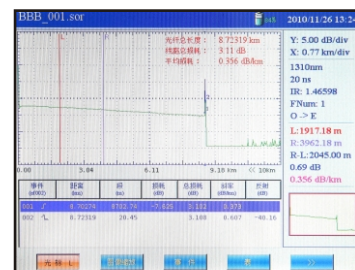
Top Panel



No.	Name	Description
1	Charging Indicator	Red light – Battery is being charged Green light – Battery is fully charged
2	Charging Interface	Used to connect to power cord to provide power supply and recharge the battery
3	RJ45 Internet Interface	Connect to internet for remote control , data sharing, and upgrade
4	USB Ports (host and client)	Connect to USB drive, keyboard, and PC for data sharing, analysis, print, and system upgrade.
5	Optical Interface	Standard FC / PC,SC/PC optical Connector (SC/APC is optional)

Screen Display

Press the on-off button to turn on the device. The main screen will be displayed as following:



Module Specifications

Model	Wavelength (nm)	Dynamic range(dB)	Event dead zone (m)	Attenuation dead zone(m)
FHO3502	1310±20/1550±20	35/33	<1.5m	<10m

Module Specifications

Distance (Km)	5m-200km
Pulse width(ns)	5ns-20µs
Measurement time	user-defined (smart link) with real-time measurement function
Distance uncertainty(m)	±(0.5m ±0.001%*testing distance±resolution)
Linearity	±0.05dB/dB
Loss threshold(dB)	0.01dB
Loss resolution(dB)	0.001dB
Distance resolution(m)	0.1m
Sampling points	64000
Data storage	1000 item



Others

Display	6.4 inch TFT color LCD
Fiber adapter	FC/PC SC/PC
Interface	USB(Principal and subordinate each), SD, RJ45
Battery	built-in rechargeable Li-ion battery (charging time <4 hours, working time >10 hours)
Power	AC/DC adapter (Input AC90-240V ±10%, Output DC18V)
Operating temperature	-10°C~40°C
Storage temperature	-40°C~70°C
Relative humidity	<80%
Weight	<2.5Kg
Dimension (mm)	248(L)×201(W)×75(H)

Standard Accessories

Standard Accessories	Quantity	Standard Accessories	Quantity
OTDR	1	FC adapter	1
AC-DC power adapter/charger	1	SC adapter	1
Operation guide	1	USB wire	1
Carrying bag	1	Toolbox software CD	1
SD card (1G)	1		1